

Anti-KRT8 antibody

Cat. No.	ml220230
Package	25 µl/100 µl/200 µl
Storage	-20°C, pH7.4 PBS, 0.05% NaN ₃ , 40% Glycerol

Product overview

Description	Anti-KRT8 rabbit polyclonal antibody
Applications	ELISA, IHC
Immunogen	Fusion protein of human KRT8
Reactivity	Human, Mouse, Rat
Content	0.6 mg/ml
Host species	Rabbit
Ig class	Immunogen-specific rabbit IgG
Purification	Antigen affinity purification

Target information

Symbol	KRT8
Full name	keratin 8
Synonyms	K8; KO; CK8; CK-8; CYK8; K2C8; CARD2
Swissprot	P05787

Target Background

This gene is a member of the type II keratin family clustered on the long arm of chromosome 12. Type I and type II keratins heteropolymerize to form intermediate-sized filaments in the cytoplasm of epithelial cells. The product of this gene typically dimerizes with keratin 18 to form an intermediate filament in simple single-layered epithelial cells. This protein plays a role in maintaining cellular structural integrity and also functions in signal transduction and cellular differentiation. Mutations in this gene cause cryptogenic cirrhosis. Alternatively spliced transcript variants have been found for this gene.

订购热线: 4008-898-798

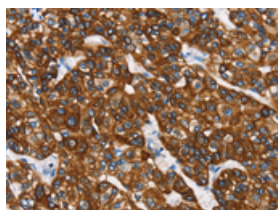
Applications

Immunohistochemistry

Predicted cell location: Cell membrane and Cytoplasm

Positive control: Human liver cancer

Recommended dilution: 50-200

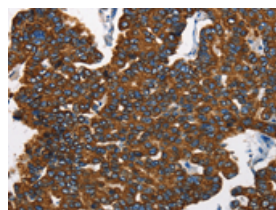


The image is immunohistochemistry of paraffin-embedded Human liver cancer tissue using ml220230(KRT8 Antibody) at dilution 1/40. (Original magnification: ×200)

Predicted cell location: Cell membrane and Cytoplasm

Positive control: Human breast cancer

Recommended dilution: 50-200



The image is immunohistochemistry of paraffin-embedded Human breast cancer tissue using ml220230(KRT8 Antibody) at dilution 1/40. (Original magnification: ×200)

ELISA

Recommended dilution: 2000-5000

联系电话: 4008-898-798, 021-61725725

联系QQ: 2881505695, 2881505696

邮箱: mlbio_cn@yeah.net

网址: www.mlbio.cn