

Anti-ECE2 antibody

Cat. No.	ml220576
Package	25 µl/100 µl/200 µl
Storage	-20°C, pH7.4 PBS, 0.05% NaN ₃ , 40% Glycerol

Product overview

Description	Anti-ECE2 rabbit polyclonal antibody
Applications	ELISA, IHC
Immunogen	Fusion protein of human ECE2
Reactivity	Human
Content	0.1 mg/ml
Host species	Rabbit
Ig class	Immunogen-specific rabbit IgG
Purification	Antigen affinity purification

Target information

Symbol	ECE2
Full name	endothelin converting enzyme 2
Synonyms	
Swissprot	O60344

Target Background

Endothelin-converting enzymes, such as ECE2 (EC 3.4.24.71), are type II metalloproteases that generate functionally pleiotropic members of the endothelin vasoactive peptide family. It converts big endothelin-1 to endothelin-1. Also involved in the processing of various neuroendocrine peptides, including neurotensin, angiotensin I, substance P, proenkephalin-derived peptides, and prodynorphin-derived peptides. May limit beta-amyloid peptide accumulation in brain. May also have methyltransferase activity.

订购热线: 4008-898-798

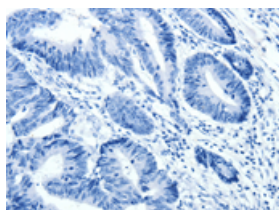
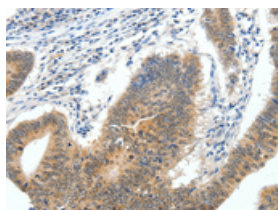
Applications

Immunohistochemistry

Predicted cell location: Cytoplasm

Positive control: Human colon cancer

Recommended dilution: 50-200

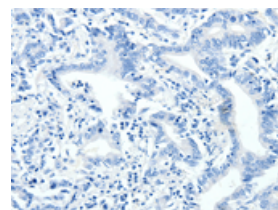
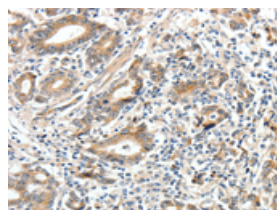


The image on the left is immunohistochemistry of paraffin-embedded Human colon cancer tissue using ml220576(ECE2 Antibody) at dilution 1/40, on the right is treated with fusion protein. (Original magnification: $\times 200$)

Predicted cell location: Cytoplasm

Positive control: Human gastric cancer

Recommended dilution: 50-200



The image on the left is immunohistochemistry of paraffin-embedded Human gastric cancer tissue using ml220576(ECE2 Antibody) at dilution 1/40, on the right is treated with fusion protein. (Original magnification: $\times 200$)

ELISA

Recommended dilution: 2000-5000

联系电话: 4008-898-798, 021-61725725

联系QQ: 2881505695, 2881505696

邮箱: mlbio_cn@yeah.net

网址: www.mlbio.cn