

## Anti-CXCL3 antibody

<b>Cat. No.</b>	ml220677
<b>Package</b>	25 µl/100 µl/200 µl
<b>Storage</b>	-20°C, pH7.4 PBS, 0.05% NaN <sub>3</sub> , 40% Glycerol

### Product overview

<b>Description</b>	Anti-CXCL3 rabbit polyclonal antibody
<b>Applications</b>	ELISA, IHC
<b>Immunogen</b>	Fusion protein of human CXCL3
<b>Reactivity</b>	Human
<b>Content</b>	0.2 mg/ml
<b>Host species</b>	Rabbit
<b>Ig class</b>	Immunogen-specific rabbit IgG
<b>Purification</b>	Antigen affinity purification

### Target information

<b>Symbol</b>	CXCL3
<b>Full name</b>	chemokine (C-X-C motif) ligand 3
<b>Synonyms</b>	GRO3; GROγ; MIP2B; SCYB3; MIP-2b; CINC-2b
<b>Swissprot</b>	P19876

### Target Background

Chemokine (C-X-C motif) ligand 3 (CXCL3) is a small cytokine belonging to the CXC chemokine family that is also known as GRO3 oncogene (GRO3), GRO protein gamma (GROγ) and macrophage inflammatory protein-2-beta (MIP2b). CXCL3 controls migration and adhesion of monocytes and mediates its effects on its target cell by interacting with a cell surface chemokine receptor called CXCR2. More recently, it has been shown that Cxcl3 regulates cell autonomously the migration of the precursors of cerebellar granule neurons toward the internal layers of cerebellum, during the morphogenesis of cerebellum.

订购热线: 4008-898-798

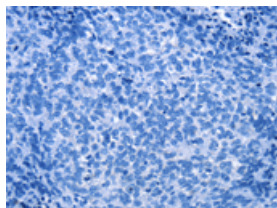
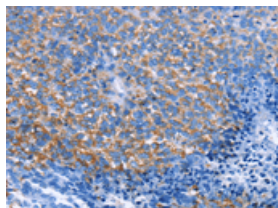
## Applications

### Immunohistochemistry

Predicted cell location: Cytoplasm

Positive control: Human ovarian cancer

Recommended dilution: 15-50

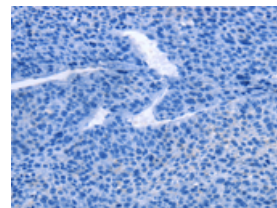
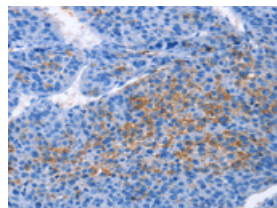


The image on the left is immunohistochemistry of paraffin-embedded Human ovarian cancer tissue using ml220677(CXCL3 Antibody) at dilution 1/25, on the right is treated with fusion protein. (Original magnification:  $\times 200$ )

Predicted cell location: Cytoplasm

Positive control: Human liver cancer

Recommended dilution: 15-50



The image on the left is immunohistochemistry of paraffin-embedded Human liver cancer tissue using ml220677(CXCL3 Antibody) at dilution 1/25, on the right is treated with fusion protein. (Original magnification:  $\times 200$ )

### ELISA

Recommended dilution: 1000-2000

联系电话: 4008-898-798, 021-61725725

联系QQ: 2881505695, 2881505696

邮箱: [mlbio\\_cn@yeah.net](mailto:mlbio_cn@yeah.net)

网址: [www.mlbio.cn](http://www.mlbio.cn)