

Anti-ABCF3 antibody

Cat. No.	ml221443
Package	25 µl/100 µl/200 µl
Storage	-20°C, pH7.4 PBS, 0.05% NaN ₃ , 40% Glycerol

Product overview

Description	Anti-ABCF3 rabbit polyclonal antibody
Applications	ELISA, IHC
Immunogen	Fusion protein of human ABCF3
Reactivity	Human, Mouse, Rat
Content	0.2 mg/ml
Host species	Rabbit
Ig class	Immunogen-specific rabbit IgG
Purification	Antigen affinity purification

Target information

Symbol	ABCF3
Full name	ATP-binding cassette, sub-family F (GCN20), member 3
Synonyms	EST201864
Swissprot	Q9NUQ8

Target Background

This protein may display an antiviral effect against flaviviruses such as west Nile virus (WNV) in the presence of OAS1B. ATP-binding cassette (ABC) transporters regulate the transport of a variety of physiologic substrates. But this protein lacks transmembrane domains and is probably not involved in transport.

订购热线: 4008-898-798

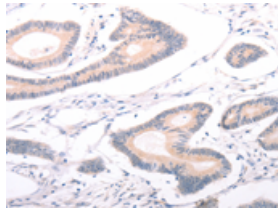
Applications

Immunohistochemistry

Predicted cell location: Cytoplasm

Positive control: Human colon cancer

Recommended dilution: 25-100

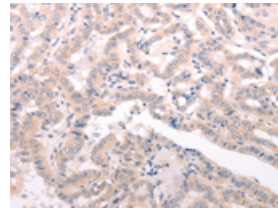


The image on the left is immunohistochemistry of paraffin-embedded Human colon cancer tissue using ml221443(ABCF3 Antibody) at dilution 1/30, on the right is treated with fusion protein. (Original magnification: $\times 200$)

Predicted cell location: Cytoplasm

Positive control: Human thyroid cancer

Recommended dilution: 25-100



The image on the left is immunohistochemistry of paraffin-embedded Human thyroid cancer tissue using ml221443(ABCF3 Antibody) at dilution 1/30, on the right is treated with fusion protein. (Original magnification: $\times 200$)

ELISA

Recommended dilution: 2000-5000

联系电话: 4008-898-798, 021-61725725

联系QQ: 2881505695, 2881505696

邮箱: mlbio_cn@yeah.net

网址: www.mlbio.cn