

Anti-INTS10 antibody

Cat. No.	ml221738
Package	25 µl/100 µl/200 µl
Storage	-20°C, pH7.4 PBS, 0.05% NaN ₃ , 40% Glycerol

Product overview

Description	Anti-INTS10 rabbit polyclonal antibody
Applications	ELISA, IHC
Immunogen	Fusion protein of human INTS10
Reactivity	Human, Mouse
Content	0.4 mg/ml
Host species	Rabbit
Ig class	Immunogen-specific rabbit IgG
Purification	Antigen affinity purification

Target information

Symbol	INTS10
Full name	integrator complex subunit 10
Synonyms	INT10; C8orf35
Swissprot	Q9NVR2

Target Background

INTS10 is a subunit of the Integrator complex, which associates with the C-terminal domain of RNA polymerase II large subunit and mediates 3-prime end processing of small nuclear RNAs U1. INTS10 (integrator complex subunit 10) is also known as INT10 and is a 710 amino acid protein that is localized to the nucleus. INTS10 is a component of the integrator complex and, as such, is thought to aid in the regulation of 3'-end processing of spliceosomal U1 and U2 snRNAs.

订购热线: 4008-898-798

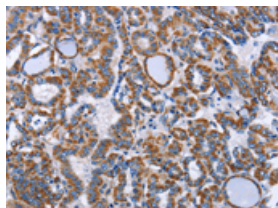
Applications

Immunohistochemistry

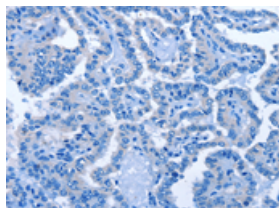
Predicted cell location: Cytoplasm

Positive control: Human thyroid cancer

Recommended dilution: 50-200



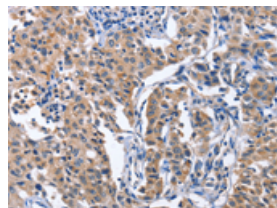
The image on the left is immunohistochemistry of paraffin-embedded Human thyroid cancer tissue using ml221738(INTS10 Antibody) at dilution 1/50, on the right is treated with fusion protein. (Original magnification: $\times 200$)



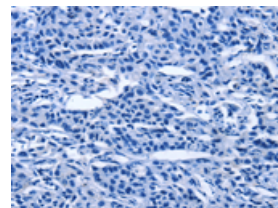
Predicted cell location: Cytoplasm

Positive control: Human lung cancer

Recommended dilution: 50-200



The image on the left is immunohistochemistry of paraffin-embedded Human lung cancer tissue using ml221738(INTS10 Antibody) at dilution 1/50, on the right is treated with fusion protein. (Original magnification: $\times 200$)



ELISA

Recommended dilution: 1000-5000

联系电话: 4008-898-798, 021-61725725

联系QQ: 2881505695, 2881505696

邮箱: mlbio_cn@yeah.net

网址: www.mlbio.cn