

## Anti-KLF17 antibody

<b>Cat. No.</b>	ml221780
<b>Package</b>	25 µl/100 µl/200 µl
<b>Storage</b>	-20°C, pH7.4 PBS, 0.05% NaN <sub>3</sub> , 40% Glycerol

### Product overview

<b>Description</b>	Anti-KLF17 rabbit polyclonal antibody
<b>Applications</b>	ELISA, IHC
<b>Immunogen</b>	Fusion protein of human KLF17
<b>Reactivity</b>	Human
<b>Content</b>	0.3 mg/ml
<b>Host species</b>	Rabbit
<b>Ig class</b>	Immunogen-specific rabbit IgG
<b>Purification</b>	Antigen affinity purification

### Target information

<b>Symbol</b>	KLF17
<b>Full name</b>	Kruppel-like factor 17
<b>Synonyms</b>	ZNF393; Zfp393; RP4-675G8.1
<b>Swissprot</b>	Q5JT82

### Target Background

Kruppel-like factor 17 is a protein that in humans is encoded by the KLF17 gene. Transcription repressor that binds to the promoter of target genes and prevents their expression. Acts as a negative regulator of epithelial-mesenchymal transition and metastasis in breast cancer. Specifically binds the 5'-CACCC-3' sequence in the promoter of ID1, a key metastasis regulator in breast cancer, and repress its expression. May be a germ cell-specific transcription factor that plays important roles in spermatid differentiation and oocyte development.

订购热线: 4008-898-798

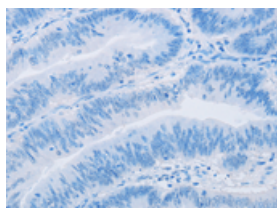
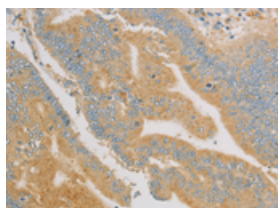
## Applications

### Immunohistochemistry

Predicted cell location: Cytoplasm

Positive control: Human colon cancer

Recommended dilution: 25-100

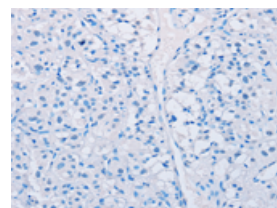
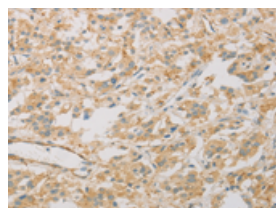


The image on the left is immunohistochemistry of paraffin-embedded Human colon cancer tissue using ml221780(KLF17 Antibody) at dilution 1/30, on the right is treated with fusion protein. (Original magnification:  $\times 200$ )

Predicted cell location: Cytoplasm

Positive control: Human thyroid cancer

Recommended dilution: 25-100



The image on the left is immunohistochemistry of paraffin-embedded Human thyroid cancer tissue using ml221780(KLF17 Antibody) at dilution 1/30, on the right is treated with fusion protein. (Original magnification:  $\times 200$ )

### ELISA

Recommended dilution: 2000-5000

联系电话: 4008-898-798, 021-61725725

联系QQ: 2881505695, 2881505696

邮箱: [mlbio\\_cn@yeah.net](mailto:mlbio_cn@yeah.net)

网址: [www.mlbio.cn](http://www.mlbio.cn)