

Anti-MAPK15 antibody

Cat. No.	ml221813
Package	25 µl/100 µl/200 µl
Storage	-20°C, pH7.4 PBS, 0.05% NaN ₃ , 40% Glycerol

Product overview

Description	Anti-MAPK15 rabbit polyclonal antibody
Applications	ELISA, IHC
Immunogen	Fusion protein of human MAPK15
Reactivity	Human
Content	0.1 mg/ml
Host species	Rabbit
Ig class	Immunogen-specific rabbit IgG
Purification	Antigen affinity purification

Target information

Symbol	MAPK15
Full name	mitogen-activated protein kinase 15
Synonyms	ERK7; ERK8
Swissprot	Q8TD08

Target Background

MAPK15 (mitogen-activated protein kinase 15, ERK8) is a 544 amino acid protein that belongs to the CMGC Ser/Thr protein kinase family (MAP kinase subfamily). MAP kinases play a significant role in many biological processes, including cell adhesion and spreading, cell differentiation and apoptosis. MAPK15 functions as a catalytic kinase using ATP to produce ADP and a phosphoprotein. A TXY motif, containing one threonine and one tyrosine residue, activates the MAP kinases upon phosphorylation. MAPK15 is a ubiquitously expressed protein with highest expression found in lung and kidney.

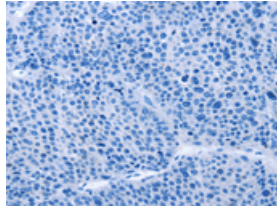
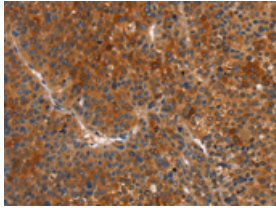
Applications

Immunohistochemistry

Predicted cell location: Cytoplasm

Positive control: Human liver cancer

Recommended dilution: 25-100

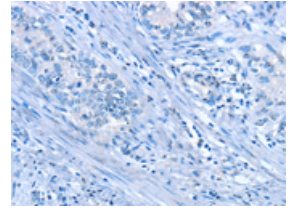
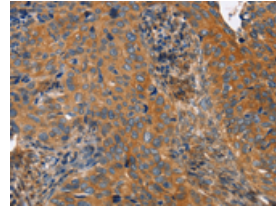


The image on the left is immunohistochemistry of paraffin-embedded Human liver cancer tissue using ml221813(MAPK15 Antibody) at dilution 1/15, on the right is treated with fusion protein. (Original magnification: $\times 200$)

Predicted cell location: Cytoplasm

Positive control: Human cervical cancer

Recommended dilution: 25-100



The image on the left is immunohistochemistry of paraffin-embedded Human cervical cancer tissue using ml221813(MAPK15 Antibody) at dilution 1/15, on the right is treated with fusion protein. (Original magnification: $\times 200$)

ELISA

Recommended dilution: 2000-5000

联系电话: 4008-898-798, 021-61725725

联系QQ: 2881505695, 2881505696

邮箱: mlbio_cn@yeah.net

网址: www.mlbio.cn