

## Anti-STK40 antibody

<b>Cat. No.</b>	ml221826
<b>Package</b>	25 µl/100 µl/200 µl
<b>Storage</b>	-20°C, pH7.4 PBS, 0.05% NaN <sub>3</sub> , 40% Glycerol

### Product overview

<b>Description</b>	Anti-STK40 rabbit polyclonal antibody
<b>Applications</b>	ELISA, IHC
<b>Immunogen</b>	Fusion protein of human STK40
<b>Reactivity</b>	Human, Mouse, Rat
<b>Content</b>	0.3 mg/ml
<b>Host species</b>	Rabbit
<b>Ig class</b>	Immunogen-specific rabbit IgG
<b>Purification</b>	Antigen affinity purification

### Target information

<b>Symbol</b>	STK40
<b>Full name</b>	serine/threonine kinase 40
<b>Synonyms</b>	SHIK; SgK495
<b>Swissprot</b>	Q8N2I9

### Target Background

STK40 (Serine/threonine-protein kinase 40), also known as Sugen kinase 495, is a 435 amino acid protein kinase that may be a negative regulator of NFκB and p53-mediated gene expression. Localized to both the cytoplasm and the nucleus, STK40 is ubiquitously expressed. STK40 has a central serine/threonine protein kinase domain and is homologous to TRB-3, a protein that regulates activation of MAP kinases and inhibits NFκB-mediated gene transcription. Similarly, overexpression of STK40 inhibits NFκB activation triggered by TNF and also inhibits p53-mediated transcription. There are four named isoforms of STK40 that are produced as a result of alternative splicing.

订购热线: 4008-898-798

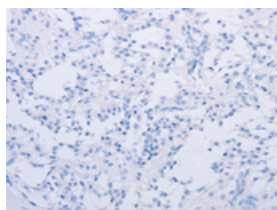
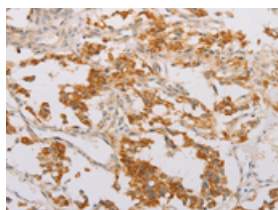
## Applications

### Immunohistochemistry

Predicted cell location: Cytoplasm and Nucleus

Positive control: Human thyroid cancer

Recommended dilution: 50-200

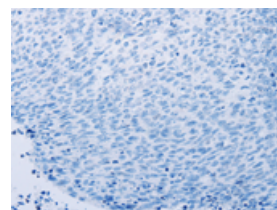
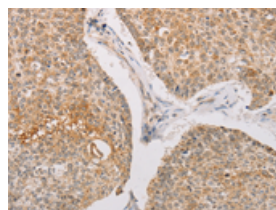


The image on the left is immunohistochemistry of paraffin-embedded Human thyroid cancer tissue using ml221826(STK40 Antibody) at dilution 1/40, on the right is treated with fusion protein. (Original magnification:  $\times 200$ )

Predicted cell location: Cytoplasm and Nucleus

Positive control: Human lung cancer

Recommended dilution: 50-200



The image on the left is immunohistochemistry of paraffin-embedded Human lung cancer tissue using ml221826(STK40 Antibody) at dilution 1/40, on the right is treated with fusion protein. (Original magnification:  $\times 200$ )

### ELISA

Recommended dilution: 1000-5000

联系电话: 4008-898-798, 021-61725725

联系QQ: 2881505695, 2881505696

邮箱: [mlbio\\_cn@yeah.net](mailto:mlbio_cn@yeah.net)

网址: [www.mlbio.cn](http://www.mlbio.cn)