

Anti-COMP antibody

Cat. No.	ml222134
Package	25 µl/100 µl/200 µl
Storage	-20°C, pH7.4 PBS, 0.05% NaN ₃ , 40% Glycerol

Product overview

Description	Anti-COMP rabbit polyclonal antibody
Applications	ELISA, IHC
Immunogen	Fusion protein of human COMP
Reactivity	Human, Mouse, Rat
Content	0.3 mg/ml
Host species	Rabbit
Ig class	Immunogen-specific rabbit IgG
Purification	Antigen affinity purification

Target information

Symbol	COMP
Full name	cartilage oligomeric matrix protein
Synonyms	MED; EDM1; EPD1; PSACH; THBS5
Swissprot	P49747

Target Background

The protein encoded by this gene is a noncollagenous extracellular matrix (ECM) protein. It consists of five identical glycoprotein subunits, each with EGF-like and calcium-binding (thrombospondin-like) domains. Oligomerization results from formation of a five-stranded coiled coil and disulfides. Binding to other ECM proteins such as collagen appears to depend on divalent cations. Mutations can cause the osteochondrodysplasias pseudochoondroplasia (PSACH) and multiple epiphyseal dysplasia (MED).

订购热线: 4008-898-798

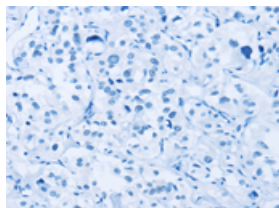
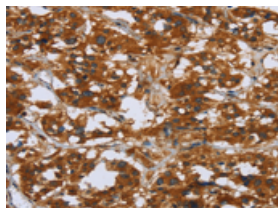
Applications

Immunohistochemistry

Predicted cell location: Cytoplasm

Positive control: Human thyroid cancer

Recommended dilution: 100-300

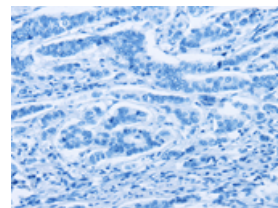
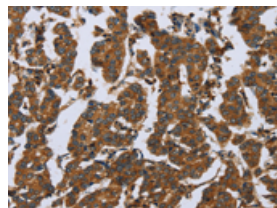


The image on the left is immunohistochemistry of paraffin-embedded Human thyroid cancer tissue using ml222134(COMP Antibody) at dilution 1/50, on the right is treated with fusion protein. (Original magnification: $\times 200$)

Predicted cell location: Cytoplasm

Positive control: Human breast cancer

Recommended dilution: 100-300



The image on the left is immunohistochemistry of paraffin-embedded Human breast cancer tissue using ml222134(COMP Antibody) at dilution 1/50, on the right is treated with fusion protein. (Original magnification: $\times 200$)

ELISA

Recommended dilution: 2000-10000

联系电话: 4008-898-798, 021-61725725

联系QQ: 2881505695, 2881505696

邮箱: mlbio_cn@yeah.net

网址: www.mlbio.cn