

Anti-CCAR1 antibody

Cat. No.	ml222236
Package	25 µl/100 µl/200 µl
Storage	-20°C, pH7.4 PBS, 0.05% NaN ₃ , 40% Glycerol

Product overview

Description	Anti-CCAR1 rabbit polyclonal antibody
Applications	ELISA, IHC
Immunogen	Fusion protein of human CCAR1
Reactivity	Human, Mouse
Content	0.7 mg/ml
Host species	Rabbit
Ig class	Immunogen-specific rabbit IgG
Purification	Antigen affinity purification

Target information

Symbol	CCAR1
Full name	cell division cycle and apoptosis regulator 1
Synonyms	RP11-437A18.1
Swissprot	Q8IX12

Target Background

Cell division cycle and apoptosis regulator protein 1 is a protein that in humans is encoded by the CCAR1 gene. The deduced 1,150-amino acid CARP1 protein contains a putative cold-shock protein domain expected to bind RNA and a putative DNA-binding motif predicted to be involved in chromosomal organization. Immunohistochemical analysis detected CARP1 in the perinuclear compartment of human breast cancer cells, and the protein had an apparent molecular mass of 130 kD by SDS-PAGE.

订购热线: 4008-898-798

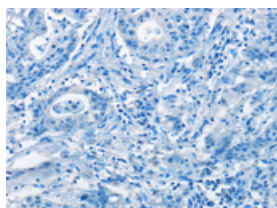
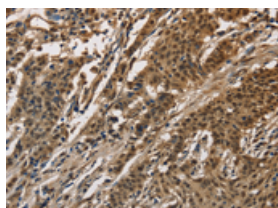
Applications

Immunohistochemistry

Predicted cell location: Nucleus

Positive control: Human gasrtic cancer

Recommended dilution: 50-200

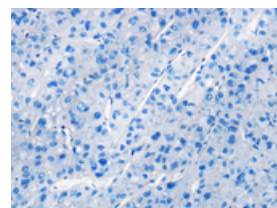
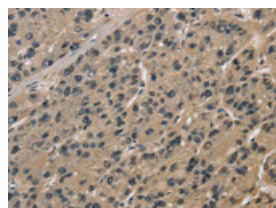


The image on the left is immunohistochemistry of paraffin-embedded Human gasrtic cancer tissue using ml222236(CCAR1 Antibody) at dilution 1/40, on the right is treated with fusion protein. (Original magnification: ×200)

Predicted cell location: Nucleus

Positive control: Human liver cancer

Recommended dilution: 50-200



The image on the left is immunohistochemistry of paraffin-embedded Human liver cancer tissue using ml222236(CCAR1 Antibody) at dilution 1/40, on the right is treated with fusion protein. (Original magnification: ×200)

ELISA

Recommended dilution: 2000-5000

联系电话: 4008-898-798, 021-61725725

联系QQ: 2881505695, 2881505696

邮箱: mlbio_cn@yeah.net

网址: www.mlbio.cn