

## Anti-MTUS1 antibody

<b>Cat. No.</b>	ml222715
<b>Package</b>	25 µl/100 µl/200 µl
<b>Storage</b>	-20°C, pH7.4 PBS, 0.05% NaN <sub>3</sub> , 40% Glycerol

### Product overview

<b>Description</b>	Anti-MTUS1 rabbit polyclonal antibody
<b>Applications</b>	ELISA, IHC
<b>Immunogen</b>	Fusion protein of human MTUS1
<b>Reactivity</b>	Human, Mouse, Rat
<b>Content</b>	0.2 mg/ml
<b>Host species</b>	Rabbit
<b>Ig class</b>	Immunogen-specific rabbit IgG
<b>Purification</b>	Antigen affinity purification

### Target information

<b>Symbol</b>	MTUS1
<b>Full name</b>	microtubule associated tumor suppressor 1
<b>Synonyms</b>	ATBP; ATIP; ICIS; MP44; MTSG1
<b>Swissprot</b>	Q9ULD2

### Target Background

This gene encodes a protein which contains a C-terminal domain able to interact with the angiotension II (AT<sub>2</sub>) receptor and a large coiled-coil region allowing dimerization. Multiple alternatively spliced transcript variants encoding different isoforms have been found for this gene. One of the transcript variants has been shown to encode a mitochondrial protein that acts as a tumor suppressor and participates in AT<sub>2</sub> signaling pathways.

订购热线: 4008-898-798

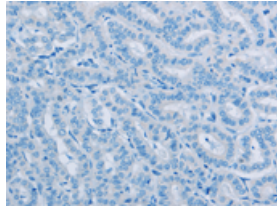
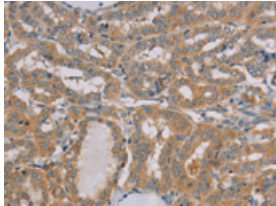
#### Applications

##### Immunohistochemistry

Predicted cell location: Cytoplasm

Positive control: Human thyroid cancer

Recommended dilution: 50-200

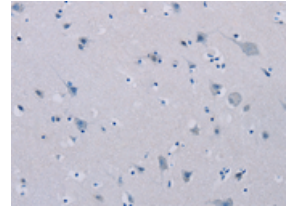
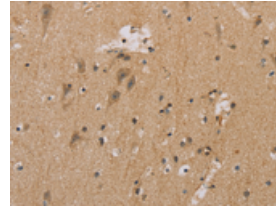


The image on the left is immunohistochemistry of paraffin-embedded Human thyroid cancer tissue using ml222715(MTUS1 Antibody) at dilution 1/20, on the right is treated with fusion protein. (Original magnification:  $\times 200$ )

Predicted cell location: Cytoplasm

Positive control: Human brain

Recommended dilution: 50-200



The image on the left is immunohistochemistry of paraffin-embedded Human brain tissue using ml222715(MTUS1 Antibody) at dilution 1/20, on the right is treated with fusion protein. (Original magnification:  $\times 200$ )

##### ELISA

Recommended dilution: 2000-5000

联系电话: 4008-898-798, 021-61725725

联系QQ: 2881505695, 2881505696

邮箱: [mlbio\\_cn@yeah.net](mailto:mlbio_cn@yeah.net)

网址: [www.mlbio.cn](http://www.mlbio.cn)