

## Anti-NDEL1 antibody

<b>Cat. No.</b>	ml222793
<b>Package</b>	25 µl/100 µl/200 µl
<b>Storage</b>	-20°C, pH7.4 PBS, 0.05% NaN <sub>3</sub> , 40% Glycerol

### Product overview

<b>Description</b>	Anti-NDEL1 rabbit polyclonal antibody
<b>Applications</b>	ELISA, IHC
<b>Immunogen</b>	Fusion protein of human NDEL1
<b>Reactivity</b>	Human, Mouse, Rat
<b>Content</b>	0.2 mg/ml
<b>Host species</b>	Rabbit
<b>Ig class</b>	Immunogen-specific rabbit IgG
<b>Purification</b>	Antigen affinity purification

### Target information

<b>Symbol</b>	NDEL1
<b>Full name</b>	nudE neurodevelopment protein 1-like 1
<b>Synonyms</b>	EOPA; NDE2; NUDEL; MITAP1; NDE1L1
<b>Swissprot</b>	Q9GZM8

### Target Background

This gene encodes a coiled-coil protein that plays a role in multiple processes including cytoskeletal organization, cell signaling and neuron migration, outgrowth and maintenance. Alternatively spliced transcript variants encoding multiple isoforms have been observed for this gene, and a pseudogene of this gene is located on the long arm of chromosome X.

订购热线: 4008-898-798

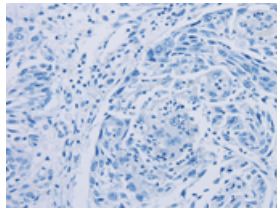
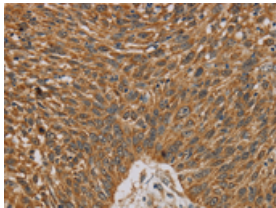
#### Applications

##### Immunohistochemistry

Predicted cell location: Cytoplasm

Positive control: Human lung cancer

Recommended dilution: 50-200



The image on the left is immunohistochemistry of paraffin-embedded Human lung cancer tissue using ml222793(NDEL1 Antibody) at dilution 1/20, on the right is treated with fusion protein. (Original magnification:  $\times 200$ )

##### ELISA

Recommended dilution: 2000-5000

联系电话: 4008-898-798, 021-61725725

联系QQ: 2881505695, 2881505696

邮箱: [mlbio\\_cn@yeah.net](mailto:mlbio_cn@yeah.net)

网址: [www.mlbio.cn](http://www.mlbio.cn)