

Anti-PLK4 antibody

Cat. No.	ml222889
Package	25 µl/100 µl/200 µl
Storage	-20°C, pH7.4 PBS, 0.05% NaN ₃ , 40% Glycerol

Product overview

Description	Anti-PLK4 rabbit polyclonal antibody
Applications	ELISA, IHC
Immunogen	Fusion protein of human PLK4
Reactivity	Human, Mouse, Rat
Content	0.8 mg/ml
Host species	Rabbit
Ig class	Immunogen-specific rabbit IgG
Purification	Antigen affinity purification

Target information

Symbol	PLK4
Full name	polo-like kinase 4
Synonyms	SAK; STK18; MCCRP2
Swissprot	O00444

Target Background

This gene encodes a member of the polo family of serine/threonine protein kinases. The protein localizes to centrioles, complex microtubule-based structures found in centrosomes, and regulates centriole duplication during the cell cycle. Three alternatively spliced transcript variants that encode different protein isoforms have been found for this gene.

订购热线: 4008-898-798

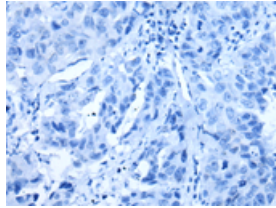
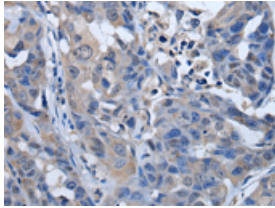
Applications

Immunohistochemistry

Predicted cell location: Cytoplasm

Positive control: Human breast cancer

Recommended dilution: 35-200



The image on the left is immunohistochemistry of paraffin-embedded Human breast cancer tissue using ml222889(PLK4 Antibody) at dilution 1/50, on the right is treated with fusion protein. (Original magnification: $\times 200$)

ELISA

Recommended dilution: 5000-10000

联系电话: 4008-898-798, 021-61725725

联系QQ: 2881505695, 2881505696

邮箱: mlbio_cn@yeah.net

网址: www.mlbio.cn