

Anti-PTP4A1 antibody

Cat. No.	ml222921
Package	25 µl/100 µl/200 µl
Storage	-20°C, pH7.4 PBS, 0.05% NaN ₃ , 40% Glycerol

Product overview

Description	Anti-PTP4A1 rabbit polyclonal antibody
Applications	ELISA, IHC
Immunogen	Fusion protein of human PTP4A1
Reactivity	Human, Mouse, Rat
Content	0.7 mg/ml
Host species	Rabbit
Ig class	Immunogen-specific rabbit IgG
Purification	Antigen affinity purification

Target information

Symbol	PTP4A1
Full name	protein tyrosine phosphatase type IVA, member 1
Synonyms	HH72; PRL1; PRL-1; PTPCAAX1; PTP(CAAX1)
Swissprot	Q93096

Target Background

This gene encodes a member of a small class of prenylated protein tyrosine phosphatases (PTPs), which contain a PTP domain and a characteristic C-terminal prenylation motif. The encoded protein is a cell signaling molecule that plays regulatory roles in a variety of cellular processes, including cell proliferation and migration. The protein may also be involved in cancer development and metastasis. This tyrosine phosphatase is a nuclear protein, but may associate with plasma membrane by means of its prenylation motif. Pseudogenes related to this gene are located on chromosomes 1, 2, 5, 7, 11 and X.

订购热线: 4008-898-798

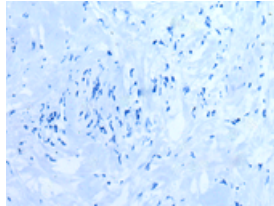
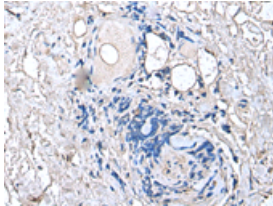
Applications

Immunohistochemistry

Predicted cell location: Cytoplasm

Positive control: Human thyroid cancer

Recommended dilution: 30-150



The image on the left is immunohistochemistry of paraffin-embedded Human thyroid cancer tissue using ml222921(PTP4A1 Antibody) at dilution 1/45, on the right is treated with fusion protein. (Original magnification: $\times 200$)

ELISA

Recommended dilution: 5000-10000

联系电话: 4008-898-798, 021-61725725

联系QQ: 2881505695, 2881505696

邮箱: mlbio_cn@yeah.net

网址: www.mlbio.cn