

## Anti-SERTAD1 antibody

<b>Cat. No.</b>	ml223109
<b>Package</b>	25 µl/100 µl/200 µl
<b>Storage</b>	-20°C, pH7.4 PBS, 0.05% NaN <sub>3</sub> , 40% Glycerol

### Product overview

<b>Description</b>	Anti-SERTAD1 rabbit polyclonal antibody
<b>Applications</b>	ELISA, IHC
<b>Immunogen</b>	Full length fusion protein
<b>Reactivity</b>	Human, Mouse
<b>Content</b>	0.6 mg/ml
<b>Host species</b>	Rabbit
<b>Ig class</b>	Immunogen-specific rabbit IgG
<b>Purification</b>	Antigen affinity purification

### Target information

<b>Symbol</b>	SERTAD1
<b>Full name</b>	SERTA domain containing 1
<b>Synonyms</b>	SEI1; TRIP-Br1
<b>Swissprot</b>	Q9UHV2

### Target Background

Acts at E2F-responsive promoters as coregulator to integrate signals provided by PHD- and/or bromodomain-containing transcription factors. Stimulates E2F1/TFDP1 transcriptional activity. Renders the activity of cyclin D1/CDK4 resistant to the inhibitory effects of CDKN2A/p16INK4A.

订购热线: 4008-898-798

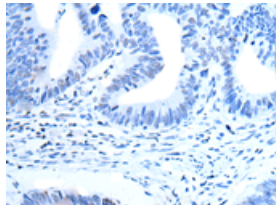
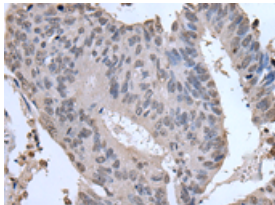
## Applications

### Immunohistochemistry

Predicted cell location: Cytoplasm and Nucleus

Positive control: Human colorectal cancer

Recommended dilution: 25-100

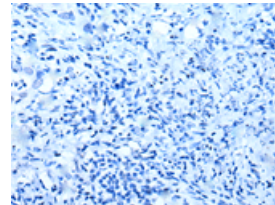
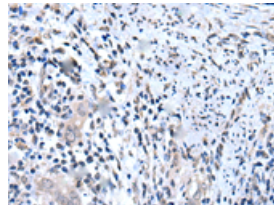


The image on the left is immunohistochemistry of paraffin-embedded Human colorectal cancer tissue using ml223109(SERTAD1 Antibody) at dilution 1/30, on the right is treated with fusion protein. (Original magnification:  $\times 200$ )

Predicted cell location: Cytoplasm and Nucleus

Positive control: Human cervical cancer

Recommended dilution: 25-100



The image on the left is immunohistochemistry of paraffin-embedded Human cervical cancer tissue using ml223109(SERTAD1 Antibody) at dilution 1/30, on the right is treated with fusion protein. (Original magnification:  $\times 200$ )

### ELISA

Recommended dilution: 5000-10000

联系电话: 4008-898-798, 021-61725725

联系QQ: 2881505695, 2881505696

邮箱: [mlbio\\_cn@yeah.net](mailto:mlbio_cn@yeah.net)

网址: [www.mlbio.cn](http://www.mlbio.cn)