

## Anti-SERPINB6 antibody

|                 |   |
|-----------------|---|
| <b>Cat. No.</b> | ml223131  |
| <b>Package</b>  | 25 µl/100 µl/200 µl                                     |
| <b>Storage</b>  | -20°C, pH7.4 PBS, 0.05% NaN <sub>3</sub> , 40% Glycerol |

### Product overview

|                     |  |
|---------------------|--|
| <b>Description</b>  | Anti-SERPINB6 rabbit polyclonal antibody |
| <b>Applications</b> | ELISA, IHC                               |
| <b>Immunogen</b>    | Fusion protein of human SERPINB6         |
| <b>Reactivity</b>   | Human                                    |
| <b>Content</b>      | 0.6 mg/ml                                |
| <b>Host species</b> | Rabbit                                   |
| <b>Ig class</b>     | Immunogen-specific rabbit IgG            |
| <b>Purification</b> | Antigen affinity purification            |

### Target information

|                  |   |
|------------------|---|
| <b>Symbol</b>    | SERPINB6  |
| <b>Full name</b> | serpin peptidase inhibitor, clade B (ovalbumin), member 6 |
| <b>Synonyms</b>  | CAP; PI6; PTI; PI-6; SPI3; DFNB91; MSTP057                |
| <b>Swissprot</b> | P35237  |

### Target Background

The protein encoded by this gene is a member of the serpin (serine proteinase inhibitor) superfamily, and ovalbumin(ov)-serpin subfamily. It was originally discovered as a placental thrombin inhibitor. The mouse homolog was found to be expressed in the hair cells of the inner ear. Mutations in this gene are associated with nonsyndromic progressive hearing loss, suggesting that this serpin plays an important role in the inner ear in the protection against leakage of lysosomal content during stress, and that loss of this protection results in cell death and sensorineural hearing loss. Alternatively spliced transcript variants have been found for this gene.

订购热线: 4008-898-798

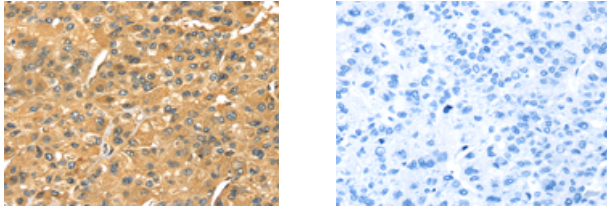
#### Applications

##### Immunohistochemistry

Predicted cell location: Cytoplasm

Positive control: Human liver cancer

Recommended dilution: 25-100



The image on the left is immunohistochemistry of paraffin-embedded Human liver cancer tissue using ml223131(SERPINB6 Antibody) at dilution 1/35, on the right is treated with fusion protein. (Original magnification:  $\times 200$ )

##### ELISA

Recommended dilution: 2000-5000

联系电话: 4008-898-798, 021-61725725

联系QQ: 2881505695, 2881505696

邮箱: [mlbio\\_cn@yeah.net](mailto:mlbio_cn@yeah.net)

网址: [www.mlbio.cn](http://www.mlbio.cn)