

Anti-THSD1 antibody

Cat. No.	ml223325
Package	25 µl/100 µl/200 µl
Storage	-20°C, pH7.4 PBS, 0.05% NaN ₃ , 40% Glycerol

Product overview

Description	Anti-THSD1 rabbit polyclonal antibody
Applications	ELISA, IHC
Immunogen	Fusion protein of human THSD1
Reactivity	Human, Mouse
Content	0.4 mg/ml
Host species	Rabbit
Ig class	Immunogen-specific rabbit IgG
Purification	Antigen affinity purification

Target information

Symbol	THSD1
Full name	thrombospondin, type I, domain containing 1
Synonyms	TMTSP; UNQ3010
Swissprot	Q9NS62

Target Background

The protein encoded by this gene contains a type 1 thrombospondin domain, which is found in a number of proteins involved in the complement pathway, as well as in extracellular matrix proteins. Alternatively spliced transcript variants encoding different isoforms have been observed for this gene.

订购热线: 4008-898-798

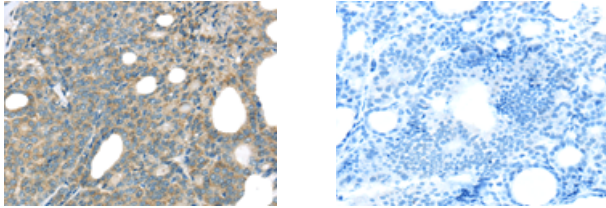
Applications

Immunohistochemistry

Predicted cell location: Cytoplasm

Positive control: Human thyroid cancer

Recommended dilution: 25-100



The image on the left is immunohistochemistry of paraffin-embedded Human thyroid cancer tissue using ml223325(THSD1 Antibody) at dilution 1/25, on the right is treated with fusion protein. (Original magnification: $\times 200$)

ELISA

Recommended dilution: 2000-5000

联系电话: 4008-898-798, 021-61725725

联系QQ: 2881505695, 2881505696

邮箱: mlbio_cn@yeah.net

网址: www.mlbio.cn