

Anti-TRIM23 antibody

Cat. No.	ml223343
Package	25 µl/100 µl/200 µl
Storage	-20°C, pH7.4 PBS, 0.05% NaN ₃ , 40% Glycerol

Product overview

Description	Anti-TRIM23 rabbit polyclonal antibody
Applications	ELISA, IHC
Immunogen	Fusion protein of human TRIM23
Reactivity	Human, Mouse, Rat
Content	0.8 mg/ml
Host species	Rabbit
Ig class	Immunogen-specific rabbit IgG
Purification	Antigen affinity purification

Target information

Symbol	TRIM23
Full name	tripartite motif containing 23
Synonyms	ARD1; ARFD1; RNF46
Swissprot	P36406

Target Background

The protein encoded by this gene is a member of the tripartite motif (TRIM) family. The TRIM motif includes three zinc-binding domains, a RING, a B-box type 1 and a B-box type 2, and a coiled-coil region. This protein is also a member of the ADP ribosylation factor family of guanine nucleotide-binding family of proteins. Its carboxy terminus contains an ADP-ribosylation factor domain and a guanine nucleotide binding site, while the amino terminus contains a GTPase activating protein domain which acts on the guanine nucleotide binding site. The protein localizes to lysosomes and the Golgi apparatus. It plays a role in the formation of intracellular transport vesicles, their movement from one compartment to another, and phospholipase D activation. Three alternatively spliced transcript variants for this gene have been described.

订购热线: 4008-898-798

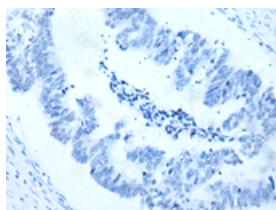
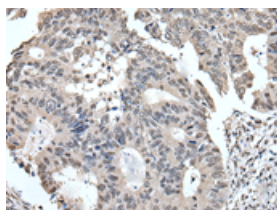
Applications

Immunohistochemistry

Predicted cell location: Nucleus or Cytoplasm

Positive control: Human colorectal cancer

Recommended dilution: 35-200

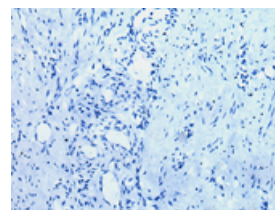
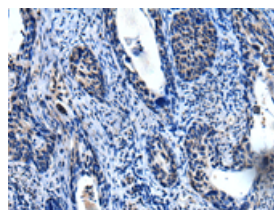


The image on the left is immunohistochemistry of paraffin-embedded Human colorectal cancer tissue using ml223343(TRIM23 Antibody) at dilution 1/55, on the right is treated with fusion protein. (Original magnification: $\times 200$)

Predicted cell location: Nucleus or Cytoplasm

Positive control: Human cervical cancer

Recommended dilution: 35-200



The image on the left is immunohistochemistry of paraffin-embedded Human cervical cancer tissue using ml223343(TRIM23 Antibody) at dilution 1/55, on the right is treated with fusion protein. (Original magnification: $\times 200$)

ELISA

Recommended dilution: 5000-10000

联系电话: 4008-898-798, 021-61725725

联系QQ: 2881505695, 2881505696

邮箱: mlbio_cn@yeah.net

网址: www.mlbio.cn