

## Anti-TRPC4AP antibody

<b>Cat. No.</b>	ml223428
<b>Package</b>	25 µl/100 µl/200 µl
<b>Storage</b>	-20°C, pH7.4 PBS, 0.05% NaN <sub>3</sub> , 40% Glycerol

### Product overview

<b>Description</b>	Anti-TRPC4AP rabbit polyclonal antibody
<b>Applications</b>	ELISA, IHC
<b>Immunogen</b>	Fusion protein of human TRPC4AP
<b>Reactivity</b>	Human, Mouse
<b>Content</b>	0.4 mg/ml
<b>Host species</b>	Rabbit
<b>Ig class</b>	Immunogen-specific rabbit IgG
<b>Purification</b>	Antigen affinity purification

### Target information

<b>Symbol</b>	TRPC4AP
<b>Full name</b>	transient receptor potential cation channel, subfamily C, member 4 associated protein
<b>Synonyms</b>	TRUSS; TRRP4AP; PPP1R158; C20orf188
<b>Swissprot</b>	Q8TEL6

### Target Background

TRPC4AP (transient receptor potential cation channel, subfamily C, member 4 associated protein), also known as TRUSS or TRRP4AP, is a 797 amino acid protein that is expressed in a variety of tissues, with highest expression in liver, heart, testis and brain. Thought to function as a scaffolding protein, TRPC4AP interacts with TNF-R1 and may both link TNF-R1 to the IKK signalsome complex, and participate in the activation of NFκB p50, an event that occurs in response to TNF-R1 ligation. TRPC4AP exists as multiple alternatively spliced isoforms that are encoded by a gene which maps to human chromosome 20. Comprising approximately 2% of the human genome, chromosome 20 contains nearly 63 million bases that encode over 600 genes, some of which are associated with Creutzfeldt-Jakob disease, amyotrophic lateral sclerosis, spinal muscular atrophy, ring chromosome 20 epilepsy syndrome and Alagille syndrome.

订购热线: 4008-898-798

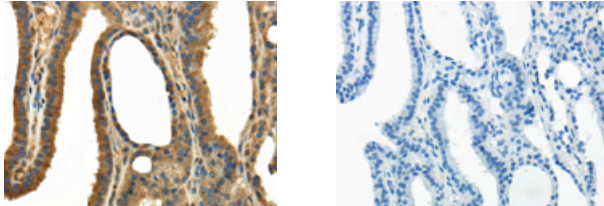
#### Applications

##### Immunohistochemistry

Predicted cell location: Cytoplasm and Cell membrane

Positive control: Human thyroid cancer

Recommended dilution: 25-100



The image on the left is immunohistochemistry of paraffin-embedded Human thyroid cancer tissue using ml223428(TRPC4AP Antibody) at dilution 1/30, on the right is treated with fusion protein. (Original magnification:  $\times 200$ )

##### ELISA

Recommended dilution: 2000-5000

联系电话: 4008-898-798, 021-61725725

联系QQ: 2881505695, 2881505696

邮箱: [mlbio\\_cn@yeah.net](mailto:mlbio_cn@yeah.net)

网址: [www.mlbio.cn](http://www.mlbio.cn)