

Anti-UBL4B antibody

Cat. No.	ml223470
Package	25 µl/100 µl/200 µl
Storage	-20°C, pH7.4 PBS, 0.05% NaN ₃ , 40% Glycerol

Product overview

Description	Anti-UBL4B rabbit polyclonal antibody
Applications	ELISA, IHC
Immunogen	Full length fusion protein
Reactivity	Human
Content	0.2 mg/ml
Host species	Rabbit
Ig class	Immunogen-specific rabbit IgG
Purification	Antigen affinity purification

Target information

Symbol	UBL4B
Full name	ubiquitin-like 4B
Synonyms	
Swissprot	Q8N7F7

Target Background

Ubiquitin is a 77 amino acid protein that targets proteins for degradation by the 26S proteasome. Ubiquitin-like proteins are not directly involved in protein degradation, but appear to have many mechanistic similarities with the ubiquitin pathway. UBL4B (Ubiquitin-like protein 4B) is a 174 amino acid cytoplasmic protein that contains a ubiquitin-like domain. UBL4B likely arose by retroposition during mammalian evolution from UBL4A, an X-linked intron-bearing housekeeping gene. While UBL4A is highly conserved, UBL4B has undergone rapid evolution and may have evolved new functions. Expression of UBL4B is restricted to post-meiotic germ cells in testis and ovarian tissue, where it likely functions in post-translational protein modification.

订购热线: 4008-898-798

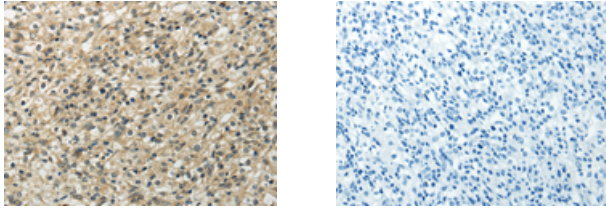
Applications

Immunohistochemistry

Predicted cell location: Cytoplasm

Positive control: Human prostate cancer

Recommended dilution: 10-50



The image on the left is immunohistochemistry of paraffin-embedded Human prostate cancer tissue using ml223470(UBL4B Antibody) at dilution 1/20, on the right is treated with fusion protein. (Original magnification: ×200)

ELISA

Recommended dilution: 1000-2000

联系电话: 4008-898-798, 021-61725725

联系QQ: 2881505695, 2881505696

邮箱: mlbio_cn@yeah.net

网址: www.mlbio.cn