

## Anti-ZNF217 antibody

<b>Cat. No.</b>	ml223608
<b>Package</b>	25 µl/100 µl/200 µl
<b>Storage</b>	-20°C, pH7.4 PBS, 0.05% NaN <sub>3</sub> , 40% Glycerol

### Product overview

<b>Description</b>	Anti-ZNF217 rabbit polyclonal antibody
<b>Applications</b>	ELISA, IHC
<b>Immunogen</b>	Fusion protein of human ZNF217
<b>Reactivity</b>	Human
<b>Content</b>	0.6 mg/ml
<b>Host species</b>	Rabbit
<b>Ig class</b>	Immunogen-specific rabbit IgG
<b>Purification</b>	Antigen affinity purification

### Target information

<b>Symbol</b>	ZNF217
<b>Full name</b>	zinc finger protein 217
<b>Synonyms</b>	ZABC1
<b>Swissprot</b>	O75362

### Target Background

ZNF217, also known as ZABC1, is a zinc finger protein belonging to the Krüppel C2H2-type zinc-finger protein family. It localizes to the nucleus and may play a role in transcriptional repression of a variety of genes through the recruitment of co-repressor complexes containing proteins such as CtBP, HDAC1 and HDAC2. In addition, ZNF217 participates in cell differentiation and appears to function as an oncogene. Expression of ZNF217 is amplified in various tumors and overexpression of the protein can attenuate apoptotic signals and lead to epithelial cell immortalization. Binds to the promoters of target genes and functions as repressor. Promotes cell proliferation and antagonizes cell death. Promotes phosphorylation of AKT1 at 'Ser-473'.

订购热线: 4008-898-798

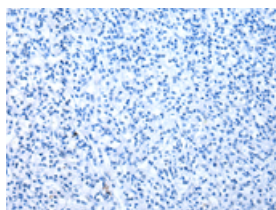
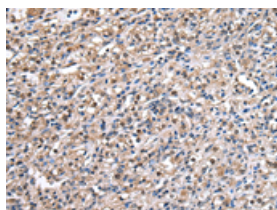
## Applications

### Immunohistochemistry

Predicted cell location: Nucleus and Cytoplasm

Positive control: Human prostate cancer

Recommended dilution: 25-100



The image on the left is immunohistochemistry of paraffin-embedded Human prostate cancer tissue using ml223608(ZNF217 Antibody) at dilution 1/30, on the right is treated with fusion protein. (Original magnification:  $\times 200$ )

### ELISA

Recommended dilution: 2000-5000

联系电话: 4008-898-798, 021-61725725

联系QQ: 2881505695, 2881505696

邮箱: [mlbio\\_cn@yeah.net](mailto:mlbio_cn@yeah.net)

网址: [www.mlbio.cn](http://www.mlbio.cn)