

## Anti-ARL17 antibody

<b>Cat. No.</b>	ml223646
<b>Package</b>	25 µl/100 µl/200 µl
<b>Storage</b>	-20°C, pH7.4 PBS, 0.05% NaN <sub>3</sub> , 40% Glycerol

### Product overview

<b>Description</b>	Anti-ARL17 rabbit polyclonal antibody
<b>Applications</b>	ELISA, IHC
<b>Immunogen</b>	Fusion protein of human ARL17
<b>Reactivity</b>	Human
<b>Content</b>	0.5 mg/ml
<b>Host species</b>	Rabbit
<b>Ig class</b>	Immunogen-specific rabbit IgG
<b>Purification</b>	Antigen affinity purification

### Target information

<b>Symbol</b>	ARL17
<b>Full name</b>	ADP-ribosylation factor-like 17A/ADP-ribosylation factor-like 17B
<b>Synonyms</b>	ARF1P2; ARL17P1/ARL17; ARL17A
<b>Swissprot</b>	Q8IVW1

### Target Background

ARL17 (ADP-ribosylation factor-like protein 17), also known as ARF1P2 or ARL17P1, is a 177 amino acid member of the ARF protein family. In human, there are two genes which have been identified as ARL17A and ARL17B that code for identical proteins and colocalize at chromosomal position 17q21.31. ARL17 functions as an activator of the cholera toxin catalytic subunit, an ADP-ribosyltransferase. Localized to the Golgi apparatus, ARL17 may also be involved in the modulation of vesicle budding and uncoating within the Golgi. ARL17 is expressed as three isoforms produced by alternative splicing events. GTP-binding protein that functions as an allosteric activator of the cholera toxin catalytic subunit, an ADP-ribosyltransferase. Involved in protein trafficking; may modulate vesicle budding and uncoating within the Golgi apparatus (By similarity).

订购热线: 4008-898-798

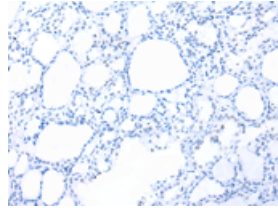
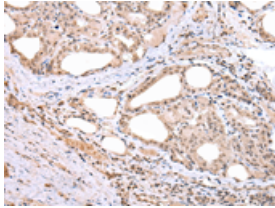
#### Applications

##### Immunohistochemistry

Predicted cell location: Cytoplasm and Nucleus

Positive control: Human thyroid cancer

Recommended dilution: 25-100

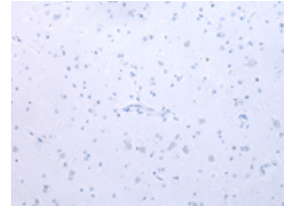
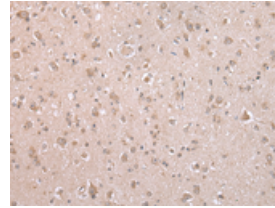


The image on the left is immunohistochemistry of paraffin-embedded Human thyroid cancer tissue using ml223646(ARL17 Antibody) at dilution 1/20, on the right is treated with fusion protein. (Original magnification:  $\times 200$ )

Predicted cell location: Cytoplasm and Nucleus

Positive control: Human brain

Recommended dilution: 25-100



The image on the left is immunohistochemistry of paraffin-embedded Human brain tissue using ml223646(ARL17 Antibody) at dilution 1/20, on the right is treated with fusion protein. (Original magnification:  $\times 200$ )

##### ELISA

Recommended dilution: 2000-5000

联系电话: 4008-898-798, 021-61725725

联系QQ: 2881505695, 2881505696

邮箱: [mlbio\\_cn@yeah.net](mailto:mlbio_cn@yeah.net)

网址: [www.mlbio.cn](http://www.mlbio.cn)