

## Anti-NUDT18 antibody

|                 |   |
|-----------------|---|
| <b>Cat. No.</b> | ml223793  |
| <b>Package</b>  | 25 µl/100 µl/200 µl                                     |
| <b>Storage</b>  | -20°C, pH7.4 PBS, 0.05% NaN <sub>3</sub> , 40% Glycerol |

### Product overview

|                     |  |
|---------------------|--|
| <b>Description</b>  | Anti-NUDT18 rabbit polyclonal antibody |
| <b>Applications</b> | ELISA, IHC                             |
| <b>Immunogen</b>    | Fusion protein of human NUDT18         |
| <b>Reactivity</b>   | Human, Rat                             |
| <b>Content</b>      | 0.6 mg/ml                              |
| <b>Host species</b> | Rabbit                                 |
| <b>Ig class</b>     | Immunogen-specific rabbit IgG          |
| <b>Purification</b> | Antigen affinity purification          |

### Target information

|                  |  |
|------------------|--|
| <b>Symbol</b>    | NUDT18   |
| <b>Full name</b> | nudix (nucleoside diphosphate linked moiety X)-type motif 18 |
| <b>Synonyms</b>  | MTH3   |
| <b>Swissprot</b> | Q6ZVK8   |

### Target Background

The protein encoded by this gene is a member of the Nudix hydrolase family. Nudix hydrolases eliminate potentially toxic nucleotide metabolites from the cell and regulate the concentrations and availability of many different nucleotide substrates, cofactors, and signaling molecules. This protein contains a Nudix hydrolase domain and hydrolyzes oxidized forms of guanosine and deoxyguanosine diphosphates.

订购热线: 4008-898-798

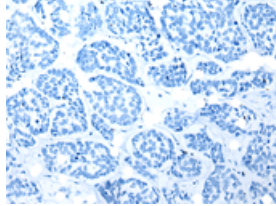
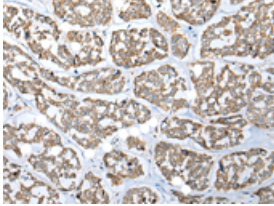
### Applications

#### Immunohistochemistry

Predicted cell location: Cytoplasm

Positive control: Human esophagus cancer

Recommended dilution: 25-100

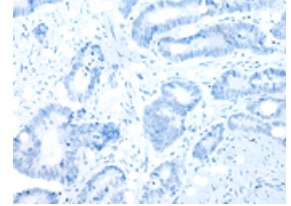
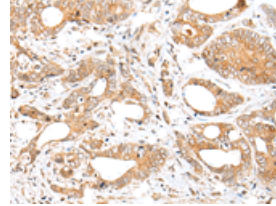


The image on the left is immunohistochemistry of paraffin-embedded Human esophagus cancer tissue using ml223793(NUDT18 Antibody) at dilution 1/25, on the right is treated with fusion protein. (Original magnification:  $\times 200$ )

Predicted cell location: Cytoplasm

Positive control: Human gastric cancer

Recommended dilution: 25-100



The image on the left is immunohistochemistry of paraffin-embedded Human gastric cancer tissue using ml223793(NUDT18 Antibody) at dilution 1/25, on the right is treated with fusion protein. (Original magnification:  $\times 200$ )

#### ELISA

Recommended dilution: 5000-10000

联系电话: 4008-898-798, 021-61725725

联系QQ: 2881505695, 2881505696

邮箱: [mlbio\\_cn@yeah.net](mailto:mlbio_cn@yeah.net)

网址: [www.mlbio.cn](http://www.mlbio.cn)