

Anti-MIOX antibody

Cat. No.	ml223814
Package	25 µl/100 µl/200 µl
Storage	-20°C, pH7.4 PBS, 0.05% NaN ₃ , 40% Glycerol

Product overview

Description	Anti-MIOX rabbit polyclonal antibody
Applications	ELISA, IHC
Immunogen	Full length fusion protein
Reactivity	Human
Content	1.6 mg/ml
Host species	Rabbit
Ig class	Immunogen-specific rabbit IgG
Purification	Antigen affinity purification

Target information

Symbol	MIOX
Full name	myo-inositol oxygenase
Synonyms	ALDRL6
Swissprot	Q9UGB7

Target Background

Myo-inositol oxygenase (MIOX), also known as ALDRL6, is a renal-specific member of the Aldo-keto reductase family. It catalyzes the first committed step in the Myo-inositol metabolism pathway and is widely distributed in mammalian tissues. Human Myo-inositol oxygenase shares 91% and 96% sequence homology with mouse and pig Myo-inositol oxygenase homologs, respectively. Myo-inositol oxygenase is responsible for the oxidative cleavage of Myo-inositol (MI) and its epimer D-chiro inositol (DCI) to D-glucuronate. The dioxygen-dependent cleavage of the C1-C6 bond in Myo-inositol is accomplished through the utilization of the Fe(II)/Fe(III) binuclear iron center of MIOX. Myo-inositol oxygenase has also been implicated in complications of diabetes, including diabetic nephropathy.

订购热线: 4008-898-798

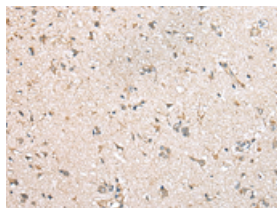
Applications

Immunohistochemistry

Predicted cell location: Cytoplasm

Positive control: Human brain

Recommended dilution: 20-100

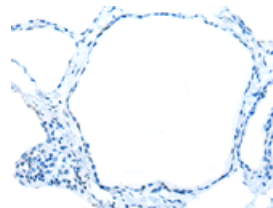
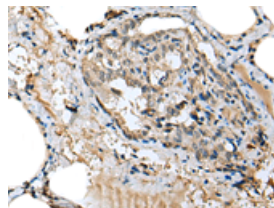


The image on the left is immunohistochemistry of paraffin-embedded Human brain tissue using ml223814(MIOX Antibody) at dilution 1/25, on the right is treated with fusion protein. (Original magnification: $\times 200$)

Predicted cell location: Cytoplasm

Positive control: Human thyroid cancer

Recommended dilution: 20-100



The image on the left is immunohistochemistry of paraffin-embedded Human thyroid cancer tissue using ml223814(MIOX Antibody) at dilution 1/25, on the right is treated with fusion protein. (Original magnification: $\times 200$)

ELISA

Recommended dilution: 5000-10000

联系电话: 4008-898-798, 021-61725725

联系QQ: 2881505695, 2881505696

邮箱: mlbio_cn@yeah.net

网址: www.mlbio.cn