

Anti-GMFB antibody

| | |
|-----------------|---|
| Cat. No. | ml223834 |
| Package | 25 µl/100 µl/200 µl |
| Storage | -20°C, pH7.4 PBS, 0.05% NaN ₃ , 40% Glycerol |

Product overview

| | |
|---------------------|--------------------------------------|
| Description | Anti-GMFB rabbit polyclonal antibody |
| Applications | ELISA, IHC |
| Immunogen | Fusion protein of human GMFB |
| Reactivity | Human, Mouse, Rat |
| Content | 0.7 mg/ml |
| Host species | Rabbit |
| Ig class | Immunogen-specific rabbit IgG |
| Purification | Antigen affinity purification |

Target information

| | |
|------------------|------------------------------|
| Symbol | GMFB |
| Full name | glia maturation factor, beta |
| Synonyms | GMF |
| Swissprot | P60983 |

Target Background

This protein, which is phosphorylated following phorbol ester stimulation, is important for the nervous system. It causes brain cell differentiation, stimulates neural regeneration and inhibits tumor cell proliferation. Overexpression of GMF in astrocytes has been shown to enhance brain-derived neurotrophic factor (BDNF) production. GMF expression is increased by exercise, and the protein is crucial for exercise-induction of BDNF. Through BDNF production, GMF appears to play a role in neuroprotection. In thymoma, T-cell development is maintained by GMF- β being produced by the tumor cells.

订购热线: 4008-898-798

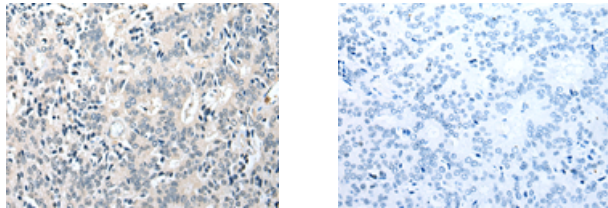
Applications

Immunohistochemistry

Predicted cell location: Cytoplasm

Positive control: Human prostate cancer

Recommended dilution: 25-100



The image on the left is immunohistochemistry of paraffin-embedded Human prostate cancer tissue using ml223834(GMFB Antibody) at dilution 1/25, on the right is treated with fusion protein. (Original magnification: $\times 200$)

ELISA

Recommended dilution: 5000-10000

联系电话: 4008-898-798, 021-61725725

联系QQ: 2881505695, 2881505696

邮箱: mlbio_cn@yeah.net

网址: www.mlbio.cn