

## Anti-ZNF138 antibody

<b>Cat. No.</b>	ml223988
<b>Package</b>	25 µl/100 µl/200 µl
<b>Storage</b>	-20°C, pH7.4 PBS, 0.05% NaN <sub>3</sub> , 40% Glycerol

### Product overview

<b>Description</b>	Anti-ZNF138 rabbit polyclonal antibody
<b>Applications</b>	ELISA, IHC
<b>Immunogen</b>	Fusion protein of human ZNF138
<b>Reactivity</b>	Human
<b>Content</b>	0.5 mg/ml
<b>Host species</b>	Rabbit
<b>Ig class</b>	Immunogen-specific rabbit IgG
<b>Purification</b>	Antigen affinity purification

### Target information

<b>Symbol</b>	ZNF138
<b>Full name</b>	zinc finger protein 138
<b>Synonyms</b>	pHZ-32
<b>Swissprot</b>	P52744

### Target Background

ZNF138 (zinc finger protein 138) is a 262 amino acid nuclear protein that is implicated in transcriptional regulation. A member of the Krüppel C2H2-type zinc-finger protein family, ZNF138 contains six C2H2-type zinc fingers. The gene encoding ZNF138 maps to human chromosome 7, which houses over 1,000 genes, comprises nearly 5% of the human genome and has been linked to Osteogenesis imperfecta, Pendred syndrome and Lissencephaly. May be involved in transcriptional regulation as a repressor.

订购热线: 4008-898-798

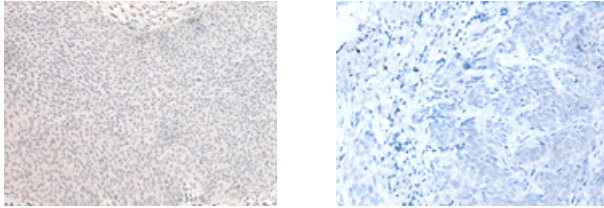
#### Applications

##### Immunohistochemistry

Predicted cell location: Nucleus

Positive control: Human cervical cancer

Recommended dilution: 25-100



The image on the left is immunohistochemistry of paraffin-embedded Human cervical cancer tissue using ml223988(ZNF138 Antibody) at dilution 1/30, on the right is treated with fusion protein. (Original magnification: ×200)

##### ELISA

Recommended dilution: 5000-10000

联系电话: 4008-898-798, 021-61725725

联系QQ: 2881505695, 2881505696

邮箱: [mlbio\\_cn@yeah.net](mailto:mlbio_cn@yeah.net)

网址: [www.mlbio.cn](http://www.mlbio.cn)