

Anti-ZNF302 antibody

Cat. No.	ml224018
Package	25 µl/100 µl/200 µl
Storage	-20°C, pH7.4 PBS, 0.05% NaN ₃ , 40% Glycerol

Product overview

Description	Anti-ZNF302 rabbit polyclonal antibody
Applications	ELISA, IHC
Immunogen	Fusion protein of human ZNF302
Reactivity	Human
Content	0.4 mg/ml
Host species	Rabbit
Ig class	Immunogen-specific rabbit IgG
Purification	Antigen affinity purification

Target information

Symbol	ZNF302
Full name	zinc finger protein 302
Synonyms	HSD16; MST154; ZNF327; MSTP154; ZNF135L; ZNF140L
Swissprot	Q9NR11

Target Background

This gene encodes a member of the zinc-finger protein family. The encoded protein contains seven C2H2-type zinc fingers and a KRAB domain, but its function has yet to be determined. Alternatively spliced transcript variants have been described.

订购热线: 4008-898-798

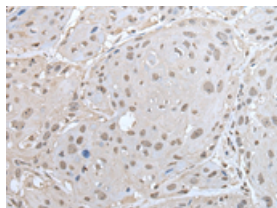
Applications

Immunohistochemistry

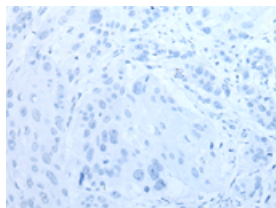
Predicted cell location: Nucleus

Positive control: Human esophagus cancer

Recommended dilution: 25-100



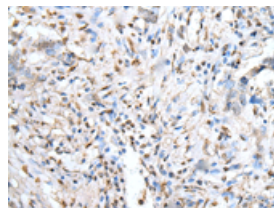
The image on the left is immunohistochemistry of paraffin-embedded Human esophagus cancer tissue using ml224018(ZNF302 Antibody) at dilution 1/30, on the right is treated with fusion protein. (Original magnification: $\times 200$)



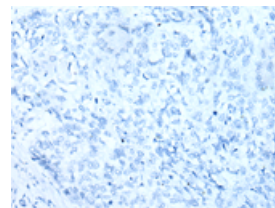
Predicted cell location: Nucleus

Positive control: Human lung cancer

Recommended dilution: 25-100



The image on the left is immunohistochemistry of paraffin-embedded Human lung cancer tissue using ml224018(ZNF302 Antibody) at dilution 1/30, on the right is treated with fusion protein. (Original magnification: $\times 200$)



ELISA

Recommended dilution: 5000-10000

联系电话: 4008-898-798, 021-61725725

联系QQ: 2881505695, 2881505696

邮箱: mlbio_cn@yeah.net

网址: www.mlbio.cn