

## Anti-UBE2E2 antibody

<b>Cat. No.</b>	ml224147
<b>Package</b>	25 µl/100 µl/200 µl
<b>Storage</b>	-20°C, pH7.4 PBS, 0.05% NaN <sub>3</sub> , 40% Glycerol

### Product overview

<b>Description</b>	Anti-UBE2E2 rabbit polyclonal antibody
<b>Applications</b>	ELISA, IHC
<b>Immunogen</b>	Full length fusion protein
<b>Reactivity</b>	Human, Mouse
<b>Content</b>	0.3 mg/ml
<b>Host species</b>	Rabbit
<b>Ig class</b>	Immunogen-specific rabbit IgG
<b>Purification</b>	Antigen affinity purification

### Target information

<b>Symbol</b>	UBE2E2
<b>Full name</b>	ubiquitin conjugating enzyme E2E 2
<b>Synonyms</b>	UBCH8
<b>Swissprot</b>	Q96LR5

### Target Background

Ubiquitination is an important mechanism through which three classes of enzymes act in concert to target short-lived or abnormal proteins for destruction. The three classes of enzymes involved in ubiquitination are the ubiquitin-activating enzymes (E1s), the ubiquitin-conjugating enzymes (E2s) and the ubiquitin-protein ligases (E3s). The first step in the ubiquitination process requires the ATP-dependent activation of the ubiquitin C-terminus and the assembly of multi-ubiquitin chains by the E1 enzyme. The ubiquitin chain is then conjugated to the E2 enzyme to generate an intermediate ubiquitin-E2 complex. The E3 enzyme then catalyzes the transfer of ubiquitin from E2 to the appropriate protein substrate, thereby targeting that substrate for degradation. A wide range of enzymes facilitate this proteolytic ubiquitin pathway, one of which is UBE2E2 (also known as UBCH8 in human), which functions as an E2 enzyme and catalyzes the ATP-dependent covalent attachment of ubiquitin to target proteins, thereby playing an important role in protein degradation.

订购热线: 4008-898-798

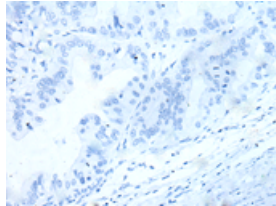
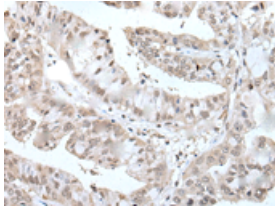
#### Applications

##### Immunohistochemistry

Predicted cell location: Cytoplasm and Nucleus

Positive control: Human liver cancer

Recommended dilution: 25-100



The image on the left is immunohistochemistry of paraffin-embedded Human liver cancer tissue using ml224147(UBE2E2 Antibody) at dilution 1/30, on the right is treated with fusion protein. (Original magnification:  $\times 200$ )

##### ELISA

Recommended dilution: 5000-10000

联系电话: 4008-898-798, 021-61725725

联系QQ: 2881505695, 2881505696

邮箱: [mlbio\\_cn@yeah.net](mailto:mlbio_cn@yeah.net)

网址: [www.mlbio.cn](http://www.mlbio.cn)