

Anti-ASXL2 antibody

Cat. No.	ml224200
Package	25 µl/100 µl/200 µl
Storage	-20°C, pH7.4 PBS, 0.05% NaN ₃ , 40% Glycerol

Product overview

Description	Anti-ASXL2 rabbit polyclonal antibody
Applications	ELISA, IHC
Immunogen	Fusion protein of human ASXL2
Reactivity	Human, Mouse
Content	0.6 mg/ml
Host species	Rabbit
Ig class	Immunogen-specific rabbit IgG
Purification	Antigen affinity purification

Target information

Symbol	ASXL2
Full name	additional sex combs like 2, transcriptional regulator
Synonyms	ASXH2
Swissprot	Q76L83

Target Background

ASXL2 is a human homolog of the *Drosophila* *asx* gene. *Drosophila* *asx* is an enhancer of *trithorax* (see MIM 159555) and *polycomb* (see MIM 610231) (ETP) gene that encodes a chromatin protein with dual functions in transcriptional activation and silencing (Kato and Kato, 2003 [PubMed 12888926]).

订购热线: 4008-898-798

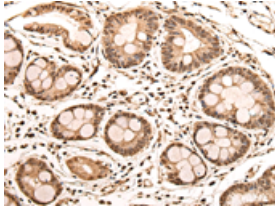
Applications

Immunohistochemistry

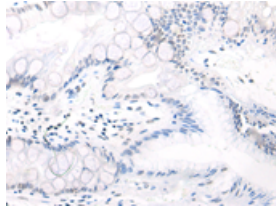
Predicted cell location: Nucleus

Positive control: Human gastric cancer

Recommended dilution: 25-100



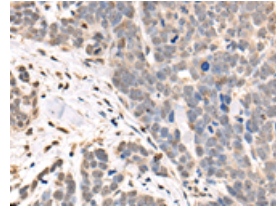
The image on the left is immunohistochemistry of paraffin-embedded Human gastric cancer tissue using ml224200(ASXL2 Antibody) at dilution 1/30, on the right is treated with fusion protein. (Original magnification: $\times 200$)



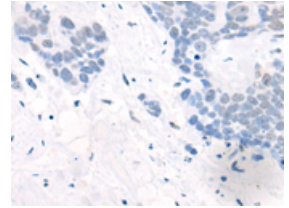
Predicted cell location: Nucleus

Positive control: Human thyroid cancer

Recommended dilution: 25-100



The image on the left is immunohistochemistry of paraffin-embedded Human thyroid cancer tissue using ml224200(ASXL2 Antibody) at dilution 1/30, on the right is treated with fusion protein. (Original magnification: $\times 200$)



ELISA

Recommended dilution: 5000-10000

联系电话: 4008-898-798, 021-61725725

联系QQ: 2881505695, 2881505696

邮箱: mlbio_cn@yeah.net

网址: www.mlbio.cn