

Anti-BBX antibody

Cat. No.	ml224238
Package	25 µl/100 µl/200 µl
Storage	-20°C, pH7.4 PBS, 0.05% NaN ₃ , 40% Glycerol

Product overview

Description	Anti-BBX rabbit polyclonal antibody
Applications	ELISA, IHC
Immunogen	Fusion protein of human BBX
Reactivity	Human
Content	0.2 mg/ml
Host species	Rabbit
Ig class	Immunogen-specific rabbit IgG
Purification	Antigen affinity purification

Target information

Symbol	BBX
Full name	bobby sox homolog (Drosophila)
Synonyms	HBP2; ARTC1; MDS001; HSPC339
Swissprot	Q8WY36

Target Background

BBX (HMG box transcription factor BBX, Bobby sox homolog, HMG box-containing protein 2) is a 941 amino acid protein encoded by the human gene BBX. BBX is a nuclear protein that contains one high mobility group (HMG) domain that belongs to the Sox (Sry-related HMG box) family of transcription factors. HMG proteins are thought to play a significant role in various human disorders. Disruptions and rearrangements in the genes coding for some of the HMG proteins are associated with common benign tumors. Commonly, antibodies against HMG proteins are found in patients suffering from autoimmune diseases. The SRY gene on the Y Chromosome, responsible for male sexual differentiation, contains a HMG-Box domain. Some HMG proteins have demonstrated extracellular activity as a chemokine, attracting neutrophils and mononuclear inflammatory cells to the infected sites. BBX functions as a transcription factor that is necessary for cell cycle progression from G1 to S phase.

订购热线: 4008-898-798

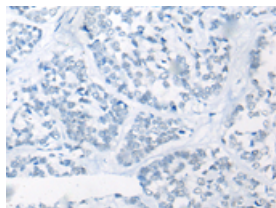
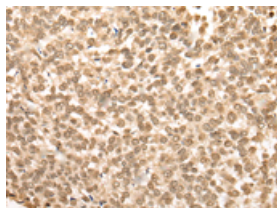
Applications

Immunohistochemistry

Predicted cell location: Nucleus

Positive control: Human esophagus cancer

Recommended dilution: 30-150

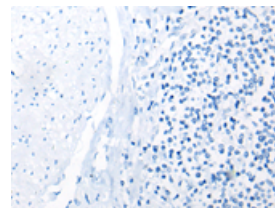
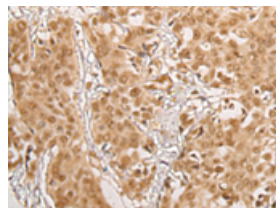


The image on the left is immunohistochemistry of paraffin-embedded Human esophagus cancer tissue using ml224238(BBX Antibody) at dilution 1/35, on the right is treated with fusion protein. (Original magnification: $\times 200$)

Predicted cell location: Nucleus

Positive control: Human prostate cancer

Recommended dilution: 30-150



The image on the left is immunohistochemistry of paraffin-embedded Human prostate cancer tissue using ml224238(BBX Antibody) at dilution 1/35, on the right is treated with fusion protein. (Original magnification: $\times 200$)

ELISA

Recommended dilution: 5000-10000

联系电话: 4008-898-798, 021-61725725

联系QQ: 2881505695, 2881505696

邮箱: mlbio_cn@yeah.net

网址: www.mlbio.cn