

## Anti-STAP1 antibody

<b>Cat. No.</b>	ml224273
<b>Package</b>	25 µl/100 µl/200 µl
<b>Storage</b>	-20°C, pH7.4 PBS, 0.05% NaN <sub>3</sub> , 40% Glycerol

### Product overview

<b>Description</b>	Anti-STAP1 rabbit polyclonal antibody
<b>Applications</b>	ELISA, IHC
<b>Immunogen</b>	Fusion protein of human STAP1
<b>Reactivity</b>	Human, Mouse
<b>Content</b>	0.3 mg/ml
<b>Host species</b>	Rabbit
<b>Ig class</b>	Immunogen-specific rabbit IgG
<b>Purification</b>	Antigen affinity purification

### Target information

<b>Symbol</b>	STAP1
<b>Full name</b>	signal transducing adaptor family member 1
<b>Synonyms</b>	BRDG1; STAP-1
<b>Swissprot</b>	Q9ULZ2

### Target Background

The protein encoded by this gene contains a proline-rich region, a pleckstrin homology (PH) domain, and a region in the carboxy terminal half with similarity to the Src Homology 2 (SH2) domain. This protein is a substrate of tyrosine-protein kinase Tec, and its interaction with tyrosine-protein kinase Tec is phosphorylation-dependent. This protein is thought to participate in a positive feedback loop by upregulating the activity of tyrosine-protein kinase Tec. Variants of this gene have been associated with autosomal-dominant hypercholesterolemia (ADH), which is characterized by elevated low-density lipoprotein cholesterol levels and in increased risk of coronary vascular disease. Alternative splicing results in multiple transcript variants.

订购热线: 4008-898-798

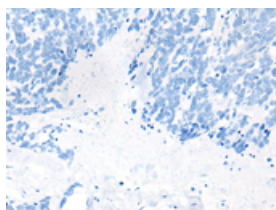
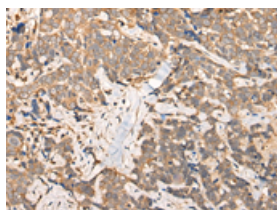
## Applications

### Immunohistochemistry

Predicted cell location: Cytoplasm or Nucleus

Positive control: Human thyroid cancer

Recommended dilution: 25-100

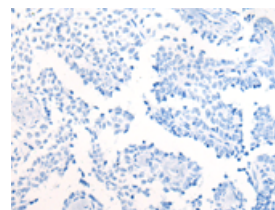
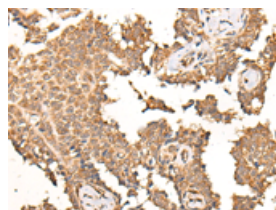


The image on the left is immunohistochemistry of paraffin-embedded Human thyroid cancer tissue using ml224273(STAP1 Antibody) at dilution 1/30, on the right is treated with fusion protein. (Original magnification:  $\times 200$ )

Predicted cell location: Cytoplasm or Nucleus

Positive control: Human ovarian cancer

Recommended dilution: 25-100



The image on the left is immunohistochemistry of paraffin-embedded Human ovarian cancer tissue using ml224273(STAP1 Antibody) at dilution 1/30, on the right is treated with fusion protein. (Original magnification:  $\times 200$ )

### ELISA

Recommended dilution: 5000-10000

联系电话: 4008-898-798, 021-61725725

联系QQ: 2881505695, 2881505696

邮箱: [mlbio\\_cn@yeah.net](mailto:mlbio_cn@yeah.net)

网址: [www.mlbio.cn](http://www.mlbio.cn)