

Anti-MCPH1 antibody

| | |
|-----------------|---|
| Cat. No. | ml224277 |
| Package | 25 µl/100 µl/200 µl |
| Storage | -20°C, pH7.4 PBS, 0.05% NaN ₃ , 40% Glycerol |

Product overview

| | |
|---------------------|---------------------------------------|
| Description | Anti-MCPH1 rabbit polyclonal antibody |
| Applications | ELISA, IHC |
| Immunogen | Fusion protein of human MCPH1 |
| Reactivity | Human |
| Content | 0.9 mg/ml |
| Host species | Rabbit |
| Ig class | Immunogen-specific rabbit IgG |
| Purification | Antigen affinity purification |

Target information

| | |
|------------------|-----------------|
| Symbol | MCPH1 |
| Full name | microcephalin 1 |
| Synonyms | MCT; BRIT1 |
| Swissprot | Q8NEM0 |

Target Background

This gene encodes a DNA damage response protein. The encoded protein may play a role in G2/M checkpoint arrest via maintenance of inhibitory phosphorylation of cyclin-dependent kinase 1. Mutations in this gene have been associated with primary autosomal recessive microcephaly 1 and premature chromosome condensation syndrome. Alternatively spliced transcript variants have been described.

订购热线: 4008-898-798

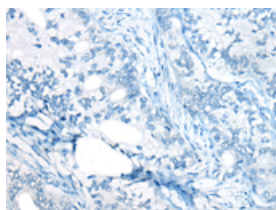
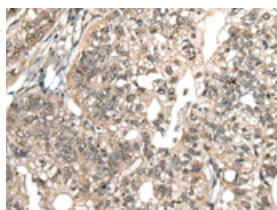
Applications

Immunohistochemistry

Predicted cell location: Nucleus and Cytoplasm

Positive control: Human gastric cancer

Recommended dilution: 50-300

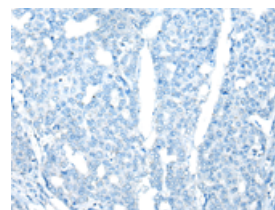
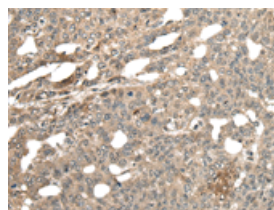


The image on the left is immunohistochemistry of paraffin-embedded Human gastric cancer tissue using ml224277(MCPH1 Antibody) at dilution 1/110, on the right is treated with fusion protein. (Original magnification: $\times 200$)

Predicted cell location: Nucleus and Cytoplasm

Positive control: Human liver cancer

Recommended dilution: 50-300



The image on the left is immunohistochemistry of paraffin-embedded Human liver cancer tissue using ml224277(MCPH1 Antibody) at dilution 1/110, on the right is treated with fusion protein. (Original magnification: $\times 200$)

ELISA

Recommended dilution: 5000-10000

联系电话: 4008-898-798, 021-61725725

联系QQ: 2881505695, 2881505696

邮箱: mlbio_cn@yeah.net

网址: www.mlbio.cn