

Anti-FAM110B antibody

Cat. No.	ml224368
Package	25 µl/100 µl/200 µl
Storage	-20°C, pH7.4 PBS, 0.05% NaN ₃ , 40% Glycerol

Product overview

Description	Anti-FAM110B rabbit polyclonal antibody
Applications	ELISA, IHC
Immunogen	Fusion protein of human FAM110B
Reactivity	Human, Mouse, Rat
Content	0.6 mg/ml
Host species	Rabbit
Ig class	Immunogen-specific rabbit IgG
Purification	Antigen affinity purification

Target information

Symbol	FAM110B
Full name	family with sequence similarity 110 member B
Synonyms	C8orf72
Swissprot	Q8TC76

Target Background

FAM110B (Familiarity with sequence similarity 110, member B) is a 370 amino acid protein, which contains several motifs that are conserved among FAM110 family members and a proline-rich region through which it probably binds proteins. Localized to the nucleus where they associate with centrosomes, FAM110A, FAM110B and FAM110C accumulate at the spindle poles during mitosis. Expression of FAM110B and FAM110C impairs cell cycle progression through G1 phase. FAM110B is expressed in testis, thyroid and spleen and is found at lower levels in ovary, adrenal gland, stomach, trachea, intestine, lymph node, spinal cord and prostate. The gene encoding FAM110B maps to human chromosome 8, which is made up of nearly 146 million bases and encodes about 800 genes. Chromosome 8 is also associated with Pfeiffer syndrome, congenital hypothyroidism and Waardenburg syndrome. May be involved in tumor progression.

订购热线: 4008-898-798

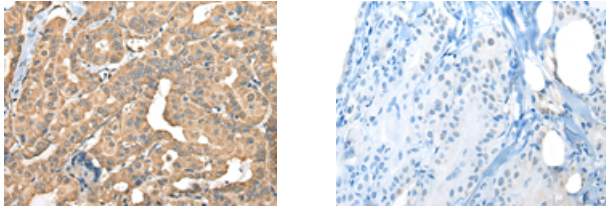
Applications

Immunohistochemistry

Predicted cell location: Cytoplasm

Positive control: Human thyroid cancer

Recommended dilution: 40-200



The image on the left is immunohistochemistry of paraffin-embedded Human thyroid cancer tissue using ml224368(FAM110B Antibody) at dilution 1/40, on the right is treated with fusion protein. (Original magnification: $\times 200$)

ELISA

Recommended dilution: 5000-10000

联系电话: 4008-898-798, 021-61725725

联系QQ: 2881505695, 2881505696

邮箱: mlbio_cn@yeah.net

网址: www.mlbio.cn