

## Anti-CAGE1 antibody

<b>Cat. No.</b>	ml224381
<b>Package</b>	25 µl/100 µl/200 µl
<b>Storage</b>	-20°C, pH7.4 PBS, 0.05% NaN <sub>3</sub> , 40% Glycerol

### Product overview

<b>Description</b>	Anti-CAGE1 rabbit polyclonal antibody
<b>Applications</b>	ELISA, IHC
<b>Immunogen</b>	Fusion protein of human CAGE1
<b>Reactivity</b>	Human
<b>Content</b>	0.6 mg/ml
<b>Host species</b>	Rabbit
<b>Ig class</b>	Immunogen-specific rabbit IgG
<b>Purification</b>	Antigen affinity purification

### Target information

<b>Symbol</b>	CAGE1
<b>Full name</b>	cancer antigen 1
<b>Synonyms</b>	CT3; CT95; CTAG3; bA69L16.7
<b>Swissprot</b>	Q8TC20

### Target Background

Cancer-associated gene 1 protein (CAGE1) is initially identified as a cancer/testis antigen. CAGE1 is mainly a nuclear protein that displays high expression in testis among normal tissues, and wide expression in various cancer tissues and cancer cell lines. CAGE1 may be associated with tumor progression, while the exact function of CAGE-1 is not well understood.

订购热线: 4008-898-798

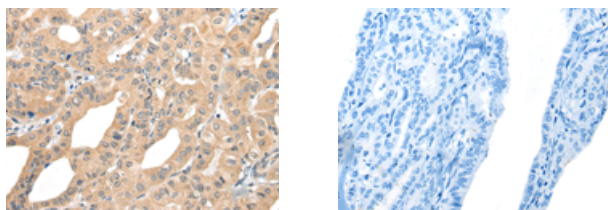
## Applications

### Immunohistochemistry

Predicted cell location: Cytoplasm

Positive control: Human thyroid cancer

Recommended dilution: 30-150



The image on the left is immunohistochemistry of paraffin-embedded Human thyroid cancer tissue using ml224381(CAGE1 Antibody) at dilution 1/35, on the right is treated with fusion protein. (Original magnification:  $\times 200$ )

### ELISA

Recommended dilution: 5000-10000

联系电话: 4008-898-798, 021-61725725

联系QQ: 2881505695, 2881505696

邮箱: [mlbio\\_cn@yeah.net](mailto:mlbio_cn@yeah.net)

网址: [www.mlbio.cn](http://www.mlbio.cn)