

Anti-CCDC112 antibody

Cat. No.	ml224432
Package	25 µl/100 µl/200 µl
Storage	-20°C, pH7.4 PBS, 0.05% NaN ₃ , 40% Glycerol

Product overview

Description	Anti-CCDC112 rabbit polyclonal antibody
Applications	ELISA, IHC
Immunogen	Fusion protein of human CCDC112
Reactivity	Human, Mouse
Content	0.5 mg/ml
Host species	Rabbit
Ig class	Immunogen-specific rabbit IgG
Purification	Antigen affinity purification

Target information

Symbol	CCDC112
Full name	coiled-coil domain containing 112
Synonyms	MBC1
Swissprot	Q8NEF3

Target Background

CCDC112 (coiled-coil domain containing 112), also known as MBC1 (mutated in bladder cancer 1), is a 446 amino acid protein. The gene encoding CCDC112 is located on chromosome 5. Due to alternative splicing events, CCDC112 exists as two isoforms. Chromosome 5 comprises about 6% of human genomic DNA and contains 181 million base pairs encoding around 1,000 genes. It is associated with Cockayne syndrome through the ERCC8 gene and familial adenomatous polyposis through the adenomatous polyposis coli (APC) tumor suppressor gene. Treacher Collins syndrome is also chromosome 5 associated and is caused by insertions or deletions within the TCOF1 gene. Deletion of the p arm of chromosome 5 leads to Cri du chat syndrome. Deletion of 5q or chromosome 5 altogether is common in therapy-related acute myelogenous leukemias and myelodysplastic syndrome.

订购热线: 4008-898-798

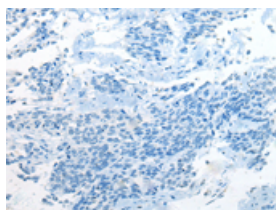
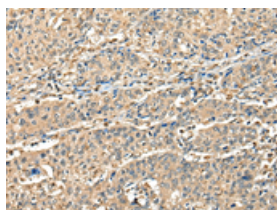
Applications

Immunohistochemistry

Predicted cell location: Cytoplasm or Nucleus

Positive control: Human prostate cancer

Recommended dilution: 40-200

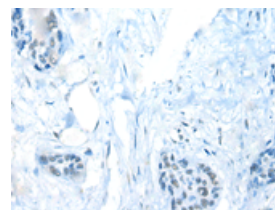
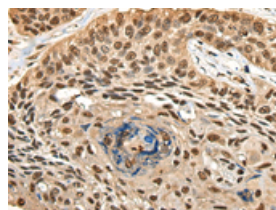


The image on the left is immunohistochemistry of paraffin-embedded Human prostate cancer tissue using ml224432(CCDC112 Antibody) at dilution 1/45, on the right is treated with fusion protein. (Original magnification: ×200)

Predicted cell location: Cytoplasm or Nucleus

Positive control: Human esophagus cancer

Recommended dilution: 40-200



The image on the left is immunohistochemistry of paraffin-embedded Human esophagus cancer tissue using ml224432(CCDC112 Antibody) at dilution 1/45, on the right is treated with fusion protein. (Original magnification: ×200)

ELISA

Recommended dilution: 5000-10000

联系电话: 4008-898-798, 021-61725725

联系QQ: 2881505695, 2881505696

邮箱: mlbio_cn@yeah.net

网址: www.mlbio.cn