

Anti-CHERP antibody

Cat. No.	ml224536
Package	25 µl/100 µl/200 µl
Storage	-20°C, pH7.4 PBS, 0.05% NaN ₃ , 40% Glycerol

Product overview

Description	Anti-CHERP rabbit polyclonal antibody
Applications	ELISA, IHC
Immunogen	Fusion protein of human CHERP
Reactivity	Human
Content	0.54 mg/ml
Host species	Rabbit
Ig class	Immunogen-specific rabbit IgG
Purification	Antigen affinity purification

Target information

Symbol	CHERP
Full name	calcium homeostasis endoplasmic reticulum protein
Synonyms	SRA1; DAN16; SCAF6
Swissprot	Q8IWX8

Target Background

The regulation of the intracellular concentration of calcium is important for proper maintenance of voltage-gated ion channels which control muscle and nerve function. Calcium homeostasis is regulated by a variety of proteins. CHERP (calcium homeostasis endoplasmic reticulum protein), also known as SRA1, DAN16 or SCAF6, is a 916 amino acid protein that localizes to the cytoplasm and the endoplasmic reticulum (ER). Expressed in pancreas, brain, lung, placenta, liver, kidney, heart and skeletal muscle, CHERP is involved in maintaining calcium homeostasis and plays a role in cell growth and proliferation. CHERP contains one G-patch domain, one RPR domain and one SURP motif and is expressed as two isoforms due to alternative splicing events.

订购热线: 4008-898-798

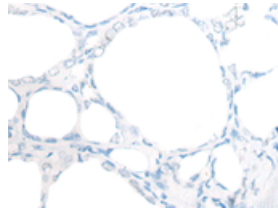
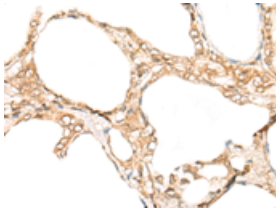
Applications

Immunohistochemistry

Predicted cell location: Nucleus or Cytoplasm

Positive control: Human thyroid cancer

Recommended dilution: 20-100

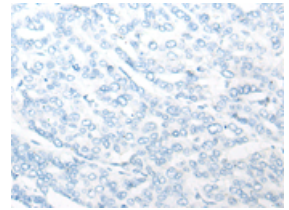
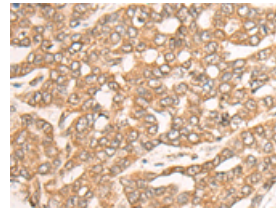


The image on the left is immunohistochemistry of paraffin-embedded Human thyroid cancer tissue using ml224536(ChERP Antibody) at dilution 1/20, on the right is treated with fusion protein. (Original magnification: $\times 200$)

Predicted cell location: Nucleus or Cytoplasm

Positive control: Human liver cancer

Recommended dilution: 20-100



The image on the left is immunohistochemistry of paraffin-embedded Human liver cancer tissue using ml224536(ChERP Antibody) at dilution 1/20, on the right is treated with fusion protein. (Original magnification: $\times 200$)

ELISA

Recommended dilution: 5000-10000

联系电话: 4008-898-798, 021-61725725

联系QQ: 2881505695, 2881505696

邮箱: mlbio_cn@yeah.net

网址: www.mlbio.cn