

Anti-TBCB antibody

Cat. No.	ml224569
Package	25 µl/100 µl/200 µl
Storage	-20°C, pH7.4 PBS, 0.05% NaN ₃ , 40% Glycerol

Product overview

Description	Anti-TBCB rabbit polyclonal antibody
Applications	ELISA, IHC
Immunogen	Full length fusion protein
Reactivity	Human, Mouse
Content	0.8 mg/ml
Host species	Rabbit
Ig class	Immunogen-specific rabbit IgG
Purification	Antigen affinity purification

Target information

Symbol	TBCB
Full name	tubulin folding cofactor B
Synonyms	CG22; CKAP1; CKAPI
Swissprot	Q99426

Target Background

Microtubules, the primary component of the cytoskeletal network, are highly dynamic structures composed of α/β Tubulin heterodimers. Biosynthesis of functional microtubules involve the participation of several chaperones, termed Tubulin folding cofactors A (TBCA), B (TBCB), D (TBCE), E (TBCE) and C (TBCC), that act on folding intermediates downstream of the cytosolic chaperon, alternatively named TCP. TBCB (tubulin folding cofactor B), also known as CG22, CKAP1 or CKAPI, is a 244 amino acid cytoplasmic protein containing one CAP-Gly domain and is widely expressed. TBCB is involved in the regulation of tubulin heterodimer dissociation and may function as a negative regulator of axonal growth.

订购热线: 4008-898-798

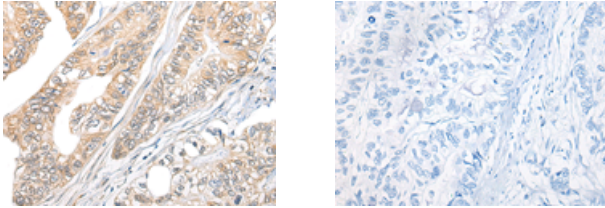
Applications

Immunohistochemistry

Predicted cell location: Cytoplasm

Positive control: Human gastric cancer

Recommended dilution: 20-100



The image on the left is immunohistochemistry of paraffin-embedded Human gastric cancer tissue using ml224569(TBCB Antibody) at dilution 1/25, on the right is treated with fusion protein. (Original magnification: $\times 200$)

ELISA

Recommended dilution: 5000-10000

联系电话: 4008-898-798, 021-61725725

联系QQ: 2881505695, 2881505696

邮箱: mlbio_cn@yeah.net

网址: www.mlbio.cn