

Anti-CPEB4 antibody

Cat. No.	ml224658
Package	25 µl/100 µl/200 µl
Storage	-20°C, pH7.4 PBS, 0.05% NaN ₃ , 40% Glycerol

Product overview

Description	Anti-CPEB4 rabbit polyclonal antibody
Applications	ELISA, IHC
Immunogen	Fusion protein of human CPEB4
Reactivity	Human, Mouse
Content	0.4 mg/ml
Host species	Rabbit
Ig class	Immunogen-specific rabbit IgG
Purification	Antigen affinity purification

Target information

Symbol	CPEB4
Full name	cytoplasmic polyadenylation element binding protein 4
Synonyms	CPE-BP4; hCPEB-4
Swissprot	Q17RY0

Target Background

Cytoplasmic polyadenylation element binding protein 4 (CPEB4) is a sequence-specific RNA-binding protein that participates in translational control. CPEB4 is a member of the CPEB family, which includes CPEB1, CPEB2, CPEB3, and CPEB4, all of which share structure and sequence identity in the C-terminal RNA-binding domain (RBD). CPEB4 has two domains: one that is structured for RNA binding and one that is unstructured and low complexity that has no known function.

订购热线: 4008-898-798

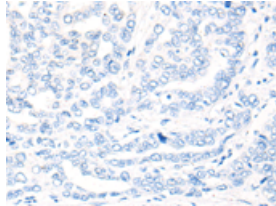
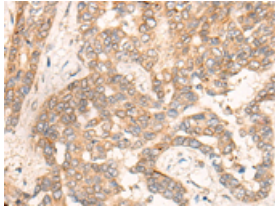
Applications

Immunohistochemistry

Predicted cell location: Cytoplasm and Cell membrane

Positive control: Human liver cancer

Recommended dilution: 25-100

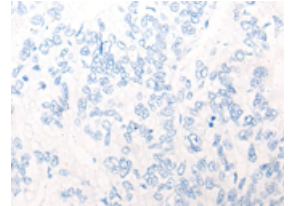
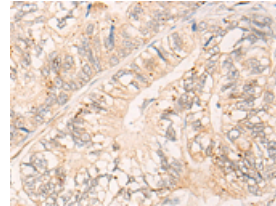


The image on the left is immunohistochemistry of paraffin-embedded Human liver cancer tissue using ml224658(CPEB4 Antibody) at dilution 1/20, on the right is treated with fusion protein. (Original magnification: $\times 200$)

Predicted cell location: Cytoplasm and Cell membrane

Positive control: Human gastric cancer

Recommended dilution: 25-100



The image on the left is immunohistochemistry of paraffin-embedded Human gastric cancer tissue using ml224658(CPEB4 Antibody) at dilution 1/20, on the right is treated with fusion protein. (Original magnification: $\times 200$)

ELISA

Recommended dilution: 5000-10000

联系电话: 4008-898-798, 021-61725725

联系QQ: 2881505695, 2881505696

邮箱: mlbio_cn@yeah.net

网址: www.mlbio.cn