

Anti-CUTA antibody

Cat. No.	ml224691
Package	25 µl/100 µl/200 µl
Storage	-20°C, pH7.4 PBS, 0.05% NaN ₃ , 40% Glycerol

Product overview

Description	Anti-CUTA rabbit polyclonal antibody
Applications	ELISA, IHC
Immunogen	Fusion protein of human CUTA
Reactivity	Human
Content	1 mg/ml
Host species	Rabbit
Ig class	Immunogen-specific rabbit IgG
Purification	Antigen affinity purification

Target information

Symbol	CUTA
Full name	cutA divalent cation tolerance homolog
Synonyms	ACHAP; C6orf82
Swissprot	O60888

Target Background

CUTA, also known as ACHAP (acetylcholinesterase-associated protein), is the 179 amino acid mammalian homolog of the cutA E. coli protein and is ubiquitously expressed, particularly in brain tissue. Existing as multiple alternatively spliced isoforms, CUTA functions as a homotrimer that is thought to act as a component of an acetylcholinesterase (AChE)-attached complex, suggesting an involvement in AChE regulation. The gene encoding CUTA maps to human chromosome 6, which contains 170 million base pairs and comprises nearly 6% of the human genome. Deletion of a portion of the q arm of chromosome 6 is associated with early onset intestinal cancer, suggesting the presence of a cancer susceptibility locus. Additionally, Porphyria cutanea tarda, Parkinson's disease, Stickler syndrome and a susceptibility to bipolar disorder are all associated with genes that map to chromosome 6.

订购热线: 4008-898-798

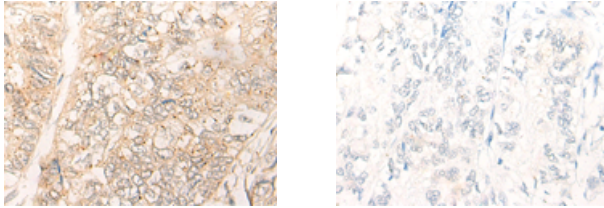
Applications

Immunohistochemistry

Predicted cell location: Cytoplasm and Nucleus

Positive control: Human gastric cancer

Recommended dilution: 30-150



The image on the left is immunohistochemistry of paraffin-embedded Human gastric cancer tissue using ml224691(CUTA Antibody) at dilution 1/40, on the right is treated with fusion protein. (Original magnification: $\times 200$)

ELISA

Recommended dilution: 5000-10000

联系电话: 4008-898-798, 021-61725725

联系QQ: 2881505695, 2881505696

邮箱: mlbio_cn@yeah.net

网址: www.mlbio.cn