

Anti-CWF19L1 antibody

Cat. No.	ml224694
Package	25 µl/100 µl/200 µl
Storage	-20°C, pH7.4 PBS, 0.05% NaN ₃ , 40% Glycerol

Product overview

Description	Anti-CWF19L1 rabbit polyclonal antibody
Applications	ELISA, IHC
Immunogen	Fusion protein of human CWF19L1
Reactivity	Human, Mouse
Content	0.5 mg/ml
Host species	Rabbit
Ig class	Immunogen-specific rabbit IgG
Purification	Antigen affinity purification

Target information

Symbol	CWF19L1
Full name	CWF19-like 1, cell cycle control (S. pombe)
Synonyms	C19L1; hDrm1; SCAR17
Swissprot	Q69YN2

Target Background

This gene encodes a member of the CWF19 protein family. Mutations in this gene have been associated with autosomal recessive spinocerebellar ataxia-17 and mild mental retardation. Alternative splicing results in multiple transcript variants.

订购热线: 4008-898-798

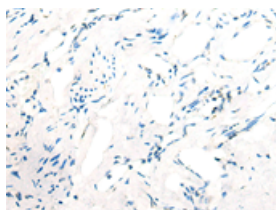
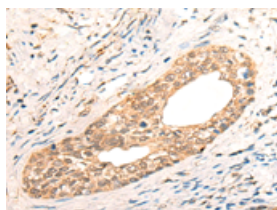
Applications

Immunohistochemistry

Predicted cell location: Cytoplasm and Nucleus

Positive control: Human cervical cancer

Recommended dilution: 20-100

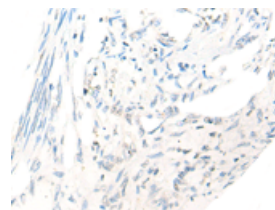
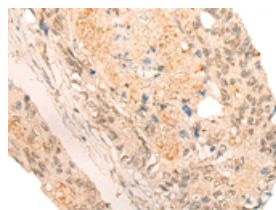


The image on the left is immunohistochemistry of paraffin-embedded Human cervical cancer tissue using ml224694(CWF19L1 Antibody) at dilution 1/20, on the right is treated with fusion protein. (Original magnification: $\times 200$)

Predicted cell location: Cytoplasm and Nucleus

Positive control: Human colorectal cancer

Recommended dilution: 20-100



The image on the left is immunohistochemistry of paraffin-embedded Human colorectal cancer tissue using ml224694(CWF19L1 Antibody) at dilution 1/20, on the right is treated with fusion protein. (Original magnification: $\times 200$)

ELISA

Recommended dilution: 5000-10000

联系电话: 4008-898-798, 021-61725725

联系QQ: 2881505695, 2881505696

邮箱: mlbio_cn@yeah.net

网址: www.mlbio.cn