

## Anti-DYNC1LI1 antibody

<b>Cat. No.</b>	ml224721
<b>Package</b>	25 µl/100 µl/200 µl
<b>Storage</b>	-20°C, pH7.4 PBS, 0.05% NaN <sub>3</sub> , 40% Glycerol

### Product overview

<b>Description</b>	Anti-DYNC1LI1 rabbit polyclonal antibody
<b>Applications</b>	ELISA, IHC
<b>Immunogen</b>	Fusion protein of human DYNC1LI1
<b>Reactivity</b>	Human, Mouse, Rat
<b>Content</b>	0.72 mg/ml
<b>Host species</b>	Rabbit
<b>Ig class</b>	Immunogen-specific rabbit IgG
<b>Purification</b>	Antigen affinity purification

### Target information

<b>Symbol</b>	DYNC1LI1
<b>Full name</b>	dynein cytoplasmic 1 light intermediate chain 1
<b>Synonyms</b>	LIC1; DLC-A; DNCLI1
<b>Swissprot</b>	Q9Y6G9

### Target Background

The protein encoded by this gene belongs to light intermediate subunit family, whose members are components of the multiprotein cytoplasmic dynein complex, which is involved in intracellular trafficking and chromosome segregation during mitosis. The protein plays a role in moving the spindle assembly checkpoint (SAC) from kinetochores to spindle poles. The protein may also mediate binding to other cargo molecules to facilitate intracellular vesicle trafficking.

订购热线: 4008-898-798

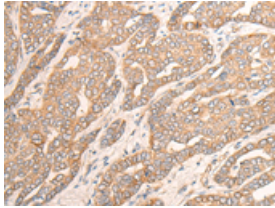
#### Applications

##### Immunohistochemistry

Predicted cell location: Cytoplasm

Positive control: Human liver cancer

Recommended dilution: 25-100

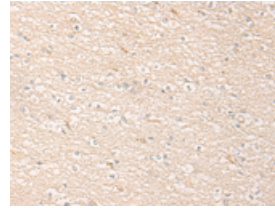


The image on the left is immunohistochemistry of paraffin-embedded Human liver cancer tissue using ml224721(DYNC1LI1 Antibody) at dilution 1/25, on the right is treated with fusion protein. (Original magnification:  $\times 200$ )

Predicted cell location: Cytoplasm

Positive control: Human brain

Recommended dilution: 25-100



The image on the left is immunohistochemistry of paraffin-embedded Human brain tissue using ml224721(DYNC1LI1 Antibody) at dilution 1/25, on the right is treated with fusion protein. (Original magnification:  $\times 200$ )

##### ELISA

Recommended dilution: 5000-10000

联系电话: 4008-898-798, 021-61725725

联系QQ: 2881505695, 2881505696

邮箱: [mlbio\\_cn@yeah.net](mailto:mlbio_cn@yeah.net)

网址: [www.mlbio.cn](http://www.mlbio.cn)