

## Anti-HLA-DMB antibody

|                 |   |
|-----------------|---|
| <b>Cat. No.</b> | ml224802  |
| <b>Package</b>  | 25 µl/100 µl/200 µl                                     |
| <b>Storage</b>  | -20°C, pH7.4 PBS, 0.05% NaN <sub>3</sub> , 40% Glycerol |

## Product overview

|                     |   |
|---------------------|---|
| <b>Description</b>  | Anti-HLA-DMB rabbit polyclonal antibody |
| <b>Applications</b> | ELISA, IHC                              |
| <b>Immunogen</b>    | Fusion protein of human HLA-DMB         |
| <b>Reactivity</b>   | Human                                   |
| <b>Content</b>      | 0.96 mg/ml                              |
| <b>Host species</b> | Rabbit                                  |
| <b>Ig class</b>     | Immunogen-specific rabbit IgG           |
| <b>Purification</b> | Antigen affinity purification           |

## Target information

|                  |   |
|------------------|---|
| <b>Symbol</b>    | HLA-DMB   |
| <b>Full name</b> | major histocompatibility complex, class II, DM beta |
| <b>Synonyms</b>  | RING7; D6S221E                                      |
| <b>Swissprot</b> | P28068  |

## Target Background

HLA-DMB belongs to the HLA class II beta chain paralogues. This class II molecule is a heterodimer consisting of an alpha (DMA) and a beta (DMB) chain, both anchored in the membrane. It is located in intracellular vesicles. DM plays a central role in the peptide loading of MHC class II molecules by helping to release the CLIP (class II-associated invariant chain peptide) molecule from the peptide binding site. Class II molecules are expressed in antigen presenting cells (APC: B lymphocytes, dendritic cells, macrophages). The beta chain is approximately 26-28 kDa and its gene contains 6 exons. Exon one encodes the leader peptide, exons 2 and 3 encode the two extracellular domains, exon 4 encodes the transmembrane domain and exon 5 encodes the cytoplasmic tail.

订购热线: 4008-898-798

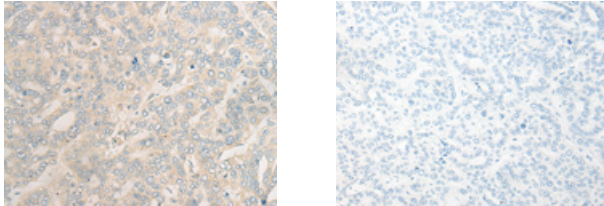
#### Applications

##### Immunohistochemistry

Predicted cell location: Cell membrane

Positive control: Human liver cancer

Recommended dilution: 20-100



The image on the left is immunohistochemistry of paraffin-embedded Human liver cancer tissue using ml224802(HLA-DMB Antibody) at dilution 1/30, on the right is treated with fusion protein. (Original magnification:  $\times 200$ )

##### ELISA

Recommended dilution: 5000-10000

联系电话: 4008-898-798, 021-61725725

联系QQ: 2881505695, 2881505696

邮箱: [mlbio\\_cn@yeah.net](mailto:mlbio_cn@yeah.net)

网址: [www.mlbio.cn](http://www.mlbio.cn)