

Anti-WDR6 antibody

Cat. No.	ml224825
Package	25 µl/100 µl/200 µl
Storage	-20°C, pH7.4 PBS, 0.05% NaN ₃ , 40% Glycerol

Product overview

Description	Anti-WDR6 rabbit polyclonal antibody
Applications	ELISA, IHC
Immunogen	Fusion protein of human WDR6
Reactivity	Human, Mouse, Rat
Content	1.2 mg/ml
Host species	Rabbit
Ig class	Immunogen-specific rabbit IgG
Purification	Antigen affinity purification

Target information

Symbol	WDR6
Full name	WD repeat domain 6
Synonyms	
Swissprot	Q9NNW5

Target Background

This gene encodes a member of the WD repeat protein family. WD repeats are minimally conserved regions of approximately 40 amino acids typically bracketed by gly-his and trp-asn (GH-WD), which may facilitate formation of heterotrimeric or multiprotein complexes. The encoded protein interacts with serine/threonine kinase 11, and is implicated in cell growth arrest. Alternative splicing results in multiple transcript variants encoding different isoforms.

订购热线: 4008-898-798

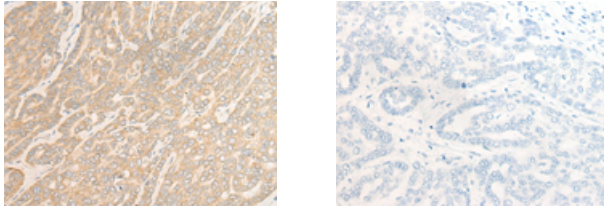
Applications

Immunohistochemistry

Predicted cell location: Cytoplasm

Positive control: Human liver cancer

Recommended dilution: 30-150



The image on the left is immunohistochemistry of paraffin-embedded Human liver cancer tissue using ml224825(WDR6 Antibody) at dilution 1/35, on the right is treated with fusion protein. (Original magnification: $\times 200$)

ELISA

Recommended dilution: 5000-10000

联系电话: 4008-898-798, 021-61725725

联系QQ: 2881505695, 2881505696

邮箱: mlbio_cn@yeah.net

网址: www.mlbio.cn