

Anti-ILKAP antibody

Cat. No.	ml224929
Package	25 µl/100 µl/200 µl
Storage	-20°C, pH7.4 PBS, 0.05% NaN ₃ , 40% Glycerol

Product overview

Description	Anti-ILKAP rabbit polyclonal antibody
Applications	ELISA, IHC
Immunogen	Fusion protein of human ILKAP
Reactivity	Human, Mouse, Rat
Content	0.9 mg/ml
Host species	Rabbit
Ig class	Immunogen-specific rabbit IgG
Purification	Antigen affinity purification

Target information

Symbol	ILKAP
Full name	ILK associated serine/threonine phosphatase
Synonyms	PPM1O; ILKAP2; ILKAP3; PP2C-DELTA
Swissprot	Q9H0C8

Target Background

The protein encoded by this gene is a protein serine/threonine phosphatase of the PP2C family. This protein can interact with integrin-linked kinase (ILK/ILK1), a regulator of integrin mediated signaling, and regulate the kinase activity of ILK. Through the interaction with ILK, this protein may selectively affect the signaling process of ILK-mediated glycogen synthase kinase 3 beta (GSK3beta), and thus participate in Wnt signaling pathway.

订购热线: 4008-898-798

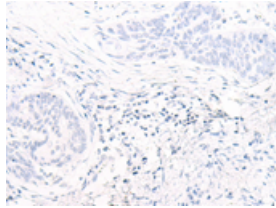
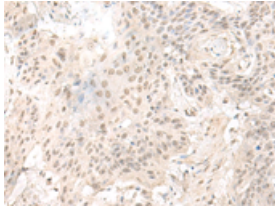
Applications

Immunohistochemistry

Predicted cell location: Nucleus

Positive control: Human esophagus cancer

Recommended dilution: 40-200

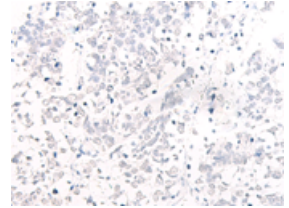
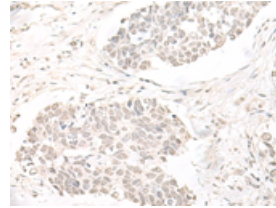


The image on the left is immunohistochemistry of paraffin-embedded Human esophagus cancer tissue using ml224929(ILKAP Antibody) at dilution 1/50, on the right is treated with fusion protein. (Original magnification: $\times 200$)

Predicted cell location: Nucleus

Positive control: Human lung cancer

Recommended dilution: 40-200



The image on the left is immunohistochemistry of paraffin-embedded Human lung cancer tissue using ml224929(ILKAP Antibody) at dilution 1/50, on the right is treated with fusion protein. (Original magnification: $\times 200$)

ELISA

Recommended dilution: 5000-10000

联系电话: 4008-898-798, 021-61725725

联系QQ: 2881505695, 2881505696

邮箱: mlbio_cn@yeah.net

网址: www.mlbio.cn