

## Anti-IFRD2 antibody

<b>Cat. No.</b>	ml224989
<b>Package</b>	25 µl/100 µl/200 µl
<b>Storage</b>	-20°C, pH7.4 PBS, 0.05% NaN <sub>3</sub> , 40% Glycerol

### Product overview

<b>Description</b>	Anti-IFRD2 rabbit polyclonal antibody
<b>Applications</b>	ELISA, IHC
<b>Immunogen</b>	Fusion protein of human IFRD2
<b>Reactivity</b>	Human
<b>Content</b>	0.54 mg/ml
<b>Host species</b>	Rabbit
<b>Ig class</b>	Immunogen-specific rabbit IgG
<b>Purification</b>	Antigen affinity purification

### Target information

<b>Symbol</b>	IFRD2
<b>Full name</b>	interferon related developmental regulator 2
<b>Synonyms</b>	SM15; IFNRP; SKMC15
<b>Swissprot</b>	Q12894

### Target Background

IFRD2 (Interferon-related developmental regulator 2), also known as SKMC15, is a 442 amino acid soluble nuclear protein. IFRD2 is ubiquitously expressed and contains a  $\beta$ -catenin-like repeat, which may indicate an involvement in APC signaling. With 75% homology to IFRD1, IFRD2 may also regulate expression of surface adhesion molecules involved in differentiation and fusion of myogenic satellite cells. Although the gene encoding IFRD2 undergoes overlapping homozygous deletions in many lung cancer cell lines, IFRD2 exhibits no loss-of-function mutations in cancer cells, suggesting a possible role in tumor progression.

订购热线: 4008-898-798

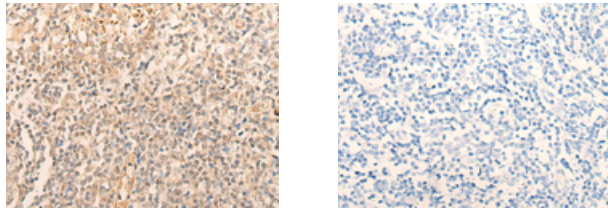
#### Applications

##### Immunohistochemistry

Predicted cell location: Nucleus

Positive control: Human tonsil

Recommended dilution: 25-100



The image on the left is immunohistochemistry of paraffin-embedded Human tonsil tissue using ml224989(IFRD2 Antibody) at dilution 1/20, on the right is treated with fusion protein. (Original magnification:  $\times 200$ )

##### ELISA

Recommended dilution: 5000-10000

联系电话: 4008-898-798, 021-61725725

联系QQ: 2881505695, 2881505696

邮箱: [mlbio\\_cn@yeah.net](mailto:mlbio_cn@yeah.net)

网址: [www.mlbio.cn](http://www.mlbio.cn)