

Anti-IGHA1 antibody

Cat. No.	ml225090
Package	25 µl/100 µl/200 µl
Storage	-20°C, pH7.4 PBS, 0.05% NaN ₃ , 40% Glycerol

Product overview

Description	Anti-IGHA1 rabbit polyclonal antibody
Applications	ELISA, IHC
Immunogen	Fusion protein of human IGHA1
Reactivity	Human
Content	1.14 mg/ml
Host species	Rabbit
Ig class	Immunogen-specific rabbit IgG
Purification	Antigen affinity purification

Target information

Symbol	IGHA1
Full name	immunoglobulin heavy constant alpha 1
Synonyms	IgA1
Swissprot	P01876

Target Background

Constant region of immunoglobulin heavy chains. Immunoglobulins, also known as antibodies, are membrane-bound or secreted glycoproteins produced by B lymphocytes. In the recognition phase of humoral immunity, the membrane-bound immunoglobulins serve as receptors which, upon binding of a specific antigen, trigger the clonal expansion and differentiation of B lymphocytes into immunoglobulins-secreting plasma cells. Secreted immunoglobulins mediate the effector phase of humoral immunity, which results in the elimination of bound antigens (PubMed:22158414, PubMed:20176268). The antigen binding site is formed by the variable domain of one heavy chain, together with that of its associated light chain. Thus, each immunoglobulin has two antigen binding sites with remarkable affinity for a particular antigen. The variable domains are assembled by a process called V-(D)-J rearrangement and can then be subjected to somatic hypermutations which, after exposure to antigen and selection, allow affinity maturation for a particular antigen (PubMed:17576170, PubMed:20176268). Ig alpha is the major immunoglobulin class in body secretions (PubMed:2241915).

订购热线: 4008-898-798

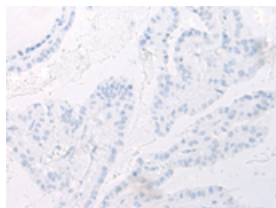
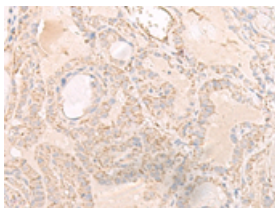
Applications

Immunohistochemistry

Predicted cell location: Secreted, Cell membrane

Positive control: Human thyroid cancer

Recommended dilution: 50-300

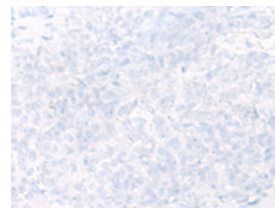
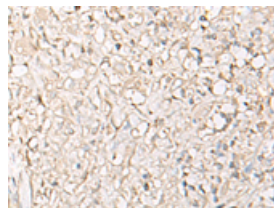


The image on the left is immunohistochemistry of paraffin-embedded Human thyroid cancer tissue using ml225090(IGHA1 Antibody) at dilution 1/65, on the right is treated with fusion protein. (Original magnification: $\times 200$)

Predicted cell location: Secreted, Cell membrane

Positive control: Human ovarian cancer

Recommended dilution: 50-300



The image on the left is immunohistochemistry of paraffin-embedded Human ovarian cancer tissue using ml225090(IGHA1 Antibody) at dilution 1/65, on the right is treated with fusion protein. (Original magnification: $\times 200$)

ELISA

Recommended dilution: 5000-10000

联系电话: 4008-898-798, 021-61725725

联系QQ: 2881505695, 2881505696

邮箱: mlbio_cn@yeah.net

网址: www.mlbio.cn