

## Anti-C9orf116 antibody

<b>Cat. No.</b>	ml225189
<b>Package</b>	25 µl/100 µl/200 µl
<b>Storage</b>	-20°C, pH7.4 PBS, 0.05% NaN <sub>3</sub> , 40% Glycerol

### Product overview

<b>Description</b>	Anti-C9orf116 rabbit polyclonal antibody
<b>Applications</b>	ELISA, IHC
<b>Immunogen</b>	Fusion protein of human C9orf116
<b>Reactivity</b>	Human
<b>Content</b>	0.96 mg/ml
<b>Host species</b>	Rabbit
<b>Ig class</b>	Immunogen-specific rabbit IgG
<b>Purification</b>	Antigen affinity purification

### Target information

<b>Symbol</b>	C9orf116
<b>Full name</b>	chromosome 9 open reading frame 116
<b>Synonyms</b>	PIERCE1; RbEST47
<b>Swissprot</b>	Q5BN46

### Target Background

C9orf116, also known as PIERCE1. PIERCE1 is an important p53 target gene contributing to normal DNA damage response and may play crucial roles in maintaining genomic integrity against genotoxic stresses, including UVC irradiation. PIERCE1 exists as two alternatively spliced isoforms and is predominantly expressed in human small cell lung cancer. PIERCE1 knockdown induces down-regulation of proapoptotic genes including Ei24, Apaf1 and PTEN, suggesting that PIERCE1 is a proapoptotic gene. It is helpful for in-depth understanding of p53 pathways and the design of new cancer therapies.

订购热线: 4008-898-798

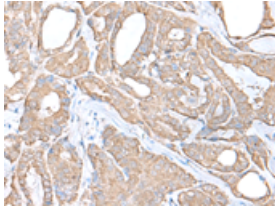
#### Applications

##### Immunohistochemistry

Predicted cell location: Cytoplasm

Positive control: Human thyroid cancer

Recommended dilution: 50-300



The image is immunohistochemistry of paraffin-embedded Human thyroid cancer tissue using ml225189(C9orf116 Antibody) at dilution 1/55. (Original magnification: ×200)

##### ELISA

Recommended dilution: 5000-10000

联系电话: 4008-898-798, 021-61725725

联系QQ: 2881505695, 2881505696

邮箱: [mlbio\\_cn@yeah.net](mailto:mlbio_cn@yeah.net)

网址: [www.mlbio.cn](http://www.mlbio.cn)