

Anti-PLGLB2 antibody

Cat. No.	ml225194
Package	25 µl/100 µl/200 µl
Storage	-20°C, pH7.4 PBS, 0.05% NaN ₃ , 40% Glycerol

Product overview

Description	Anti-PLGLB2 rabbit polyclonal antibody
Applications	ELISA, IHC
Immunogen	Fusion protein of human PLGLB2
Reactivity	Human
Content	1.14 mg/ml
Host species	Rabbit
Ig class	Immunogen-specific rabbit IgG
Purification	Antigen affinity purification

Target information

Symbol	PLGLB2
Full name	plasminogen-like B2
Synonyms	PLGP1
Swissprot	Q02325

Target Background

Cleavage of the serine proteinase plasminogen to form plasmin is the central event in the dissolution of blood clots by the fibrinolytic system. Within the fibrinolytic cascade, the serine proteinases urokinase-type plasminogen activator (uPA) and tissue-type plasminogen activator (tPA) activate the proenzyme plasminogen by cleaving plasminogen to form the fibrinolytically active enzyme plasmin. PLGLB2 (plasminogen-like B2), also known as PLGP1, is a 96 amino acid protein that resembles the N-terminal plasminogen activation peptide, which is released from plasminogen during conversion to plasmin. PLGLB2 may bind to lysine binding sites present in the kringle structures of plasminogen, an event that interferes with the binding of fibrin or α -2 antiplasmin to plasminogen and may result in the localization of activity at sites necessary for extracellular matrix destruction.

订购热线: 4008-898-798

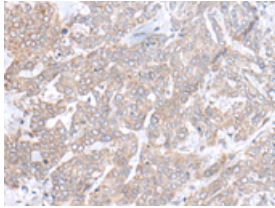
Applications

Immunohistochemistry

Predicted cell location: Secreted

Positive control: Human liver cancer

Recommended dilution: 50-300

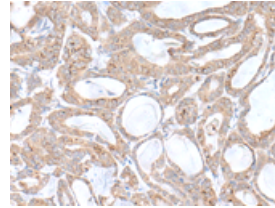


The image is immunohistochemistry of paraffin-embedded Human liver cancer tissue using ml225194(PLGLB2 Antibody) at dilution 1/65. (Original magnification: ×200)

Predicted cell location: Secreted

Positive control: Human thyroid cancer

Recommended dilution: 50-300



The image is immunohistochemistry of paraffin-embedded Human thyroid cancer tissue using ml225194(PLGLB2 Antibody) at dilution 1/65. (Original magnification: ×200)

ELISA

Recommended dilution: 5000-10000

联系电话: 4008-898-798, 021-61725725

联系QQ: 2881505695, 2881505696

邮箱: mlbio_cn@yeah.net

网址: www.mlbio.cn