

Anti-GKAP1 antibody

Cat. No.	ml225403
Package	25 µl/100 µl/200 µl
Storage	-20°C, pH7.4 PBS, 0.05% NaN ₃ , 40% Glycerol

Product overview

Description	Anti-GKAP1 rabbit polyclonal antibody
Applications	ELISA, IHC
Immunogen	Fusion protein of human GKAP1
Reactivity	Human, Mouse, Rat
Content	1.62 mg/ml
Host species	Rabbit
Ig class	Immunogen-specific rabbit IgG
Purification	Antigen affinity purification

Target information

Symbol	GKAP1
Full name	G kinase anchoring protein 1
Synonyms	FKSG21; GKAP42
Swissprot	Q5VSY0

Target Background

This gene encodes a protein that is highly similar to the mouse cGMP-dependent protein kinase anchoring protein 42kDa. The mouse protein has been found to localize with the Golgi and recruit cGMP-dependent protein kinase I alpha to the Golgi in mouse testes. It is thought to play a role in germ cell development. Transcript variants encoding different isoforms have been found for this gene.

订购热线: 4008-898-798

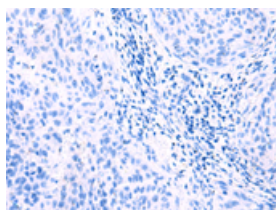
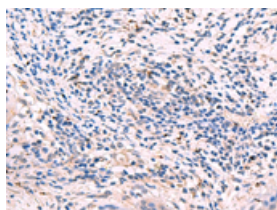
Applications

Immunohistochemistry

Predicted cell location: Cytoplasm

Positive control: Human cervical cancer

Recommended dilution: 90-450

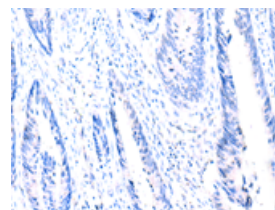
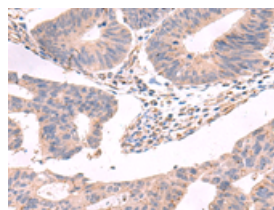


The image on the left is immunohistochemistry of paraffin-embedded Human cervical cancer tissue using ml225403(GKAP1 Antibody) at dilution 1/95, on the right is treated with fusion protein. (Original magnification: $\times 200$)

Predicted cell location: Cytoplasm

Positive control: Human colorectal cancer

Recommended dilution: 90-450



The image on the left is immunohistochemistry of paraffin-embedded Human colorectal cancer tissue using ml225403(GKAP1 Antibody) at dilution 1/95, on the right is treated with fusion protein. (Original magnification: $\times 200$)

ELISA

Recommended dilution: 5000-10000

联系电话: 4008-898-798, 021-61725725

联系QQ: 2881505695, 2881505696

邮箱: mlbio_cn@yeah.net

网址: www.mlbio.cn