

Anti-KRR1 antibody

Cat. No.	ml225410
Package	25 µl/100 µl/200 µl
Storage	-20°C, pH7.4 PBS, 0.05% NaN ₃ , 40% Glycerol

Product overview

Description	Anti-KRR1 rabbit polyclonal antibody
Applications	ELISA, IHC
Immunogen	Fusion protein of human KRR1
Reactivity	Human, Mouse
Content	1.02 mg/ml
Host species	Rabbit
Ig class	Immunogen-specific rabbit IgG
Purification	Antigen affinity purification

Target information

Symbol	KRR1
Full name	KRR1, small subunit processome component homolog
Synonyms	HRB2; RIP-1
Swissprot	Q13601

Target Background

The SSU is a large ribonucleoprotein consisting of at least 40 proteins and the U3 small nucleolar RNA. It is involved in pre-rRNA processing and ribosome assembly. The SSU is necessary for the biogenesis of the 18S rRNA. Cells that are depleted of SSU proteins will arrest in the G1 phase of the cell cycle. KRR1, also known as HRB2 (HIV-1 Rev binding protein 2) or RIP-1 (Rev interacting protein 1), is a nonribosomal component of the small subunit processome (SSU). KRR1 is 381 amino acids in length and is evolutionarily conserved among human, yeast, fly, nematode and rice. KRR1 localizes to the nucleolus and is highly expressed in dividing cells. It contains one conserved KH domain (RNA-binding motif) and is a crucial component of the SSU, required for both rRNA maturation and ribosome biogenesis.

订购热线: 4008-898-798

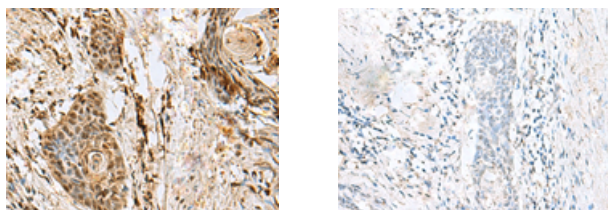
Applications

Immunohistochemistry

Predicted cell location: Nucleus

Positive control: Human esophagus cancer

Recommended dilution: 50-300



The image on the left is immunohistochemistry of paraffin-embedded Human esophagus cancer tissue using ml225410(KRR1 Antibody) at dilution 1/60, on the right is treated with fusion protein. (Original magnification: $\times 200$)

ELISA

Recommended dilution: 5000-10000

联系电话: 4008-898-798, 021-61725725

联系QQ: 2881505695, 2881505696

邮箱: mlbio_cn@yeah.net

网址: www.mlbio.cn